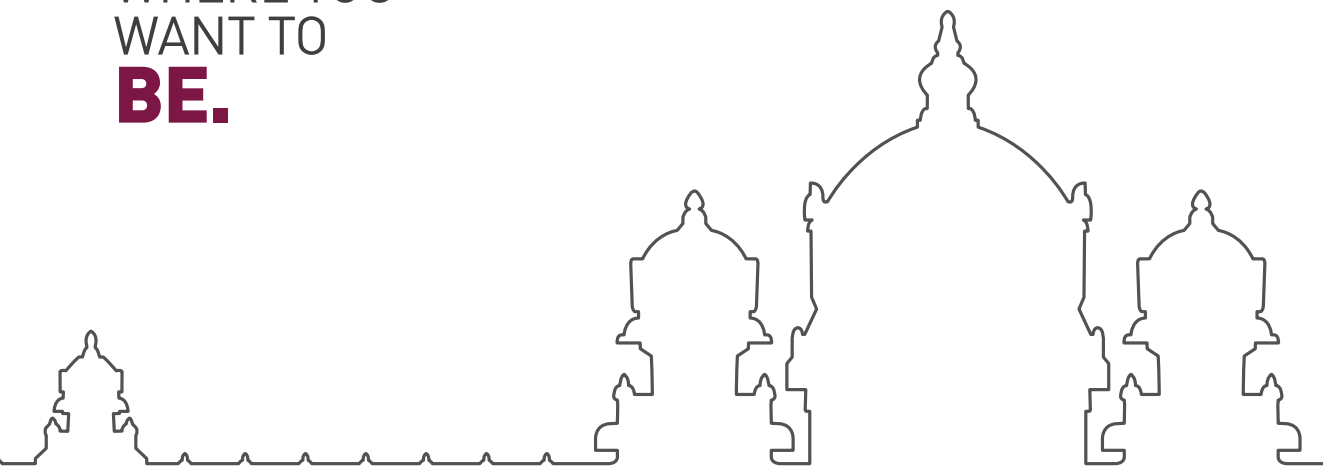




WHERE YOU  
WANT TO  
**BE.**



# Insider

[www.kclas.ac.in](http://www.kclas.ac.in)

Founder Arutchelvar Dr. N.Mahalingam	04
The Vision, Mission, Values	05
At the Helm	05
Message from the Joint Correspondent	06
Why KCLAS?	08
The Campus	10
Life at KCLAS	16
Department of Human Excellence	24
Building Leadership	26
Pursuing Excellence	28
International Partnerships	30
Pathway to a Promising Future	32
Faculty	35
Academic Excellence	36
Admission Process	73
Documents to be submitted for admission	74
Kumaraguru College of Technology	75
KCT Business School	76
Kumaraguru Institute of Agriculture	77
Forge	78
Sakthi Excellence Academy	80
Social Consciousness and Outreach	82
Namma Coimbatore	84
Kumaraguru Towards a Sustainable Ecosystem	86
Campus Map	87



# Welcome to **KCLAS**

**KINDLE** your dreams  
**CHOOSE** what to learn  
**TEAM UP** with clubs and forums  
**PERFORM** in sports and arts  
**EXPLORE** global opportunities  
**EARN** indelible memories  
**ENJOY** cool and vibrant ambience  
**GAIN** life experience



## WHERE YOU WANT TO BE

Learn, Experience and Evolve.

## Founder

ARUTCHELVAR  
Dr.N.MAHALINGAM

Arutchelvar Dr. N Mahalingam was the Founder Chairman of Sakthi Group, 6,000 crore industrial conglomerate operating in sugar, automobiles, finance, distilleries, power and logistics. Dr. N. Mahalingam was a philanthropist, educationalist and a politician. He established a number of educational institutions and is known for his support to various spiritual and cultural organisations.

He was born on 21 March, 1923 in an agriculture family at Pollachi to P.Nachimuthu Gounder, who started the Sakthi Group in 1921 by diversifying his traditional business of hiring out bullock carts to starting passenger transport services. Nachimuthu Gounder's only son Dr. N.Mahalingam joined the business in 1943 and helped grow the business to its current level. He was the founder of many educational institutions, from schools to colleges. Some of his educational institutions are Kumaraguru College of Technology, Nachimuthu Polytechnic College, Mahalingam College of Engineering, NGM College, Kumaraguru Institution of Agriculture and in his vision started Kumaraguru College of Liberal Arts and Science in 2018.

He held several important positions and played major roles fostering the development of agricultural, industrial, human resource and institutional development at the State and National levels. He served as a Member of Legislative Assembly of Tamil Nadu from 1952 to 1967 and was on the Tamil Nadu State Planning Commission for two terms. His social and humanitarian considerations took his journey beyond the boundaries of industries and scholarly tenets he nurtured.



He received the Padma Bhushan award from the Government of India in 2007 for his contributions to the nation in the field of Trade and Industry. His other honors include Honorary Consul from the Government of Mauritius during 1989 to 1992 and a number of other recognition and awards.

The enigmatic life merged into the light on October 2, 2014, the birth anniversary of Mahatma Gandhi. Until the last moment, Dr. NM was doing what he believed and envisioned talking about Saint Vallalar's philosophy. Throughout his life Dr. NM carried the twin torches of Gandhian values and Vellalar's way of life and his life is a pathway to lead a life of consciousness.

Your vision.  
Our path.

# The Vision, Mission Values

## Purpose

A springboard for educational aspirations.

## Mission

KCLAS is dedicated to offer noteworthy educational experience that expands intellectual horizons to build empowered and conscience students.

## Vision

Become a progressive research focused institution that instills passion for life-long learning and mould young people to impact the world.

## Values



We value  
Consciousness



We encourage  
Innovation



We appreciate  
Excellence



We practice  
Sustainability

## At the Helm

They are the stewards of Kumaraguru Institutions for the smooth sailing of every deck of affairs. With their pragmatism they steer the college to new horizons.



**Dr. B. K. Krishnaraj Vanavarayar**  
Chairman



**Dr. M. Manickam**  
Vice Chairman



**Shri. M. Balasubramaniam**  
Correspondent



**Shri. M. Srinivaasan**  
Treasurer



**Shri. Shankar Vanavarayar**  
Joint Correspondent



**Dr. Vijila Kennedy**  
Principal



Education is a process of awakening into the world of knowledge, experience and transformation leading into a life of inspiration and impact. The Kumaraguru campus strives to be an epicenter and ecosystem that instigates and imbibes core academics with experiential opportunities to learn. It is a space where tradition and modernity blends and growing with extraordinary opportunities of multidisciplinary, extra curricular and creative experiences is the culture. Kumaraguru is a place where values are inculcated, character is key, environment is celebrated and people are respected. Societal concern is central to the purpose and Kumaraguru works to equip for a successful career ahead and also builds one for a holistic and happy progressive life ahead.

We in Kumaraguru and its wonderful campus await daily in glee to learn, transform and impact one another and together!

- Shankar Vanavarayar  
President, Kumaraguru Institutions







## Why KCLAS?

Kumaraguru College of Liberal Arts & Science (KCLAS) is a premier college in South India and we offer an education that broadens the mind and “liberal” thinking that encourages the questioning of assumptions and reliance on facts that can be interpreted differently through different lenses. We open the doors, enabling the mind to go wherever it wants in the pursuit of knowledge and understanding. It bends toward openness instead of containment. We offer comprehensive curriculum through which students will gain strong foundational knowledge and a wide range of other courses that the students may not have exposure in a regular undergraduate program.

We aim to build a culture that places enormous emphasis on value and enables the community to derive achievements and success from this foundation, rather than by replacing it. As an institution dedicated to learning, we invest in intellectual vitality and engage with stakeholders to make a difference locally and nationally. Our contribution to this shared efforts are the unique knowledge, transformative approach and skills generated by our core activities of education and research. Our success will be visible in continued growth of our impact and reputation, and that of our region.

We attract students and faculty who are intellectually curious, independent learners, value honesty, collaboration, and are passionate about making a difference. We embrace and celebrate the beauty in differences and use these opportunities to grow, evolve and learn.

## In the Pallet

**NATIONAL AND  
INTERNATIONAL  
STUDY VISITS**

**INTER DISCIPLINARY  
COURSES**

**INTERNATIONAL  
PARTNERSHIPS**



**YUGAM, ONE OF  
COIMBATORE'S BIGGEST  
TECHNO CULTURAL  
SPORTS FEST**

**FINE ARTS**

**23  
SPRAWLING  
ACRES OF  
LAND FOR  
SPORTS**



**9  
HOSTEL  
BLOCKS,  
A HIVE TO  
3000+  
STUDENTS**

### CLUBS AND FORUMS

**ARTS  
SOCIAL  
TECHNICAL  
LITERATURE  
READING, WRITING & QUIZZING  
SOCIAL ORGANISATIONS  
NATIONAL ORGANISATIONS**

**NITHILAM - SCIENTIFIC TAMIL  
RESEARCH WING OF TAMIL MANDRAM**

**FORGE - AN INCUBATION ENTERPRISE LAUNCHED BY THE  
COIMBATORE INNOVATION & BUSINESS INCUBATOR AT  
KUMARAGURU.**

### STUDIO KCT

**A LABORATORY FOR PHOTOGRAPHY RUN BY THE STUDENT  
ENTREPRENEURS OF KUMARAGURU.**



# Philosophy of KCLAS EDGE

KCLAS is dedicated to giving a liberal arts experience to the students - giving a “Integral” “Holistic” or “Ecological” world view, essentially they are trying to describe the interconnected nature of the world and human experience. Hence KCLAS EDGE has been introduced as a unique model that nurtures the broad development of the students and maps a synergistic relationship among intellectual, emotional, social, physical, creative, aesthetic and spiritual potentials.

KCLAS Edge is built on the model given by Jacques Delors, who headed The International Commission on Education for the 21st Century to UNESCO.



## Learning to

### Know:

Learning to Know involves the acquisition and development of knowledge and skills that are needed to function in the world.

## Learning to

### Live together:

Learning to Live together involves the development of social skills and values such as respect and concern for others, social and inter-personal skills and an appreciation of the diversity among people.

## Learning to

### Do:

Learning to Do involves the acquisition of skills that would enable individuals to effectively participate and gain occupational success in the global economy and society.

## Learning to

### Be:

Learning to Be involves activities that promote holistic personal development and cultivating one's self analytical and social skills, creativity, personal discovery and an appreciation of the inherent value provided by these pursuits.



## Languages

German  
Japanese  
Hindi  
BEC (higher)

## Experience

Indian Business Immersion  
International Summer School  
Course with an Indian Partner  
University

## Leadership

Outbound Programs  
Leadership Workshop Series  
Student Council  
Clubs/Forums

## Higher Education

CA / ICWA / CS  
GMAT  
CAT / MAT  
IELTS / TOEFL  
UPSC / TNPSC  
DBMFS (30 hours)  
NCFM (30 hours)  
SAP

## Entrepreneurship

Dip. in Entrepreneurship Development  
(4 courses)  
Mentoring & Internship with  
Entrepreneurs

## Health & Fitness

Yoga / Zumba / Karate  
Tai Chi / Membership in Gym  
Sports Coaching

## The Campus

Kumaraguru has a sprawling campus of 150 Acres. Four academic blocks and an administrative block constitute more than one fourth of the campus area. Playgrounds for various sports enfold 23 acres. The magnificence of this green canopy is great with the infrastructure for academic excellence, general facilities and four signature buildings such as Ramanandha Adigalar Auditorium, Jyothi Nilayam, Gnana Sabai and Temple.

## Infrastructure for Academic Excellence

### Labs

Laboratories in general circumvent the communication breakdown between theory and practice. Labs in Kumaraguru do this in the highest order with advanced laboratories, skilled technicians and ingenious academicians who help students to build the bridge between knowing and doing. A real world environment is created for the students to practice to deal with the nature of problems faced by the society and thereby are trained to apply their knowledge in real life scenarios.



Studio Lab

### Seminar halls

There are four seminar halls named after the legends of India, Dr. Vikram Sarabhai, Sir C.V Raman, Sir Visvesvaraya and Swami Vivekananda. These halls are lively with lectures and seminars almost on all days.



## Mahatma Gandhi Central Library

Mahatma Gandhi Central Library has been specially crafted to inspire an introspective learning experience. With large, open spaces, niches for collaborative work, creatively designed work platforms and an infusion of natural and architectural aesthetics, the centre will unfold new learning paths for everyone—student, scholar, researcher, teacher, visitor or just a curious mind. It is housed in the first floor of Dr. Mahalingam Vigyan Bhavan and covers an area of 16945 square feet. The compilation in the library is extensive owning 67598 titles and 107534 volumes and has a subscription to 186 print journals, 8829 online international journals and 59 magazines for scholarly communication. Central library also provides access to printing and e-resources. Open access system is being followed to access the books and journals.

## Campus Facilities

### Medical Assistance

KCLAS ensures immediate medical service and assistance on campus. Aruljothi Medical Center on the campus is an eight bedded hospital with two doctors and nursing assistants. Students requiring special help and treatment are accompanied to the nearest multi-speciality hospitals.

### Bank

Karur Vysya Bank has an extension counter on campus with their ATM. Besides, KVB, Axis Bank ATM also function inside the campus.

### K Mart

K Mart is a retail establishment in Kumaraguru campus offering a wide range of consumer goods such as clothing, home appliances, cosmetics, sporting goods, books, electronics, stationery, etc.

### Laundry

This facility is available on the campus for all. Services such as washing, drying, steam ironing and dry cleaning are given using hi-tech steamers.



This associated smart stay of Kumaraguru is situated at a distance of 2 kilometers from the campus. This exclusive men's stay provides home for an affluent living with 68 rooms.

### Food Outs

Food is an experience. The KORE cafeteria in the campus that can serve 1000 at a time, provides hygienic, quality, timely and tasty food adding to the living and learning experience of the students, faculty and visitors. This cafeteria is located opposite B block. To the East side of the campus, is the East Kore cafeteria, located right behind Mahalingam Vigyan Bhavan. This cafe can feed 450 individuals at once. Further behind is the Campus Dining that can serve 240 people at every meal.



Namma Cafe, K's Cafe, Munch Box Students immensely love these places because the chefs and the people who assist in running the cafeterias do not compromise on the quality and hygiene of the food and the place. These spacious & trendy cafeterias not only sharpen the taste buds of the students and teachers but also becomes a meeting place for exchange of intellectual, humorous and thought provoking conversations.

### Transport Services

The college has a fleet of buses, vans and cars to transport students and staff from different places, in and around Coimbatore. These buses operate along different routes starting at 6 30 am from different locations. Currently, there are 8 buses and 6 mini buses at service.

## Boys Hostel



### Hostel

There are 6 blocks for men students and 3 blocks for women students accommodating 2335 men in 445 rooms and 987 women in 329 rooms in their respective blocks. Rooms are allocated on a triple sharing basis. Both the divisions are equipped with their own dining area, washrooms, lobby, terrace, etc.

Vallalar Maiyam and Sarada Maiyam are the facility centres for men and women student residents of Kumaraguru. These centres provide a roof for a TV hall, access to wifi, recreation room and K's cafe to enable the residents experience a home away from home.

### Hostel Dinette

Kumaraguru's resident dining is considered the kitchen of their second home as it lives up to the expectations and standards of the student residents and their parents. The residents are served a tasty, healthy and a home like vegetarian food, three times a day. Residents are given a membership to use this facility. The smooth functioning of the dinning is assured by a team of members who work under the leadership of the manager.



M.Gateway

M.Gateway



## Signature Structures on the Campus

### Ramanandha Adigalar Auditorium

This air-conditioned auditorium accommodates 1400 people on a go. The class of a stage and fine acoustics adds to the significance of the events held here. This place is widely utilised to host notable functions and events.



### Temple

The temple of Lord Ganesha at the main entrance of the college gives a promising start to each day. Presence of the Almighty gives a spiritual and an emotional support.

### Jyothi Nilayam

It is the hospitality suite of Kumaraguru known for its ambiance. Jyothi Nilayam, inspired by the classical South Indian courtyard style homes is built to the wishes of our founder Arutchelvar Ayya. With an area of about 24,000 Square feet, this centrally located guest facility is an addition to the architectural beauty of Kumaraguru. A spacious central courtyard is nested by the Jyothi shrine with 14 guest rooms, conference room, a guest lounge and the dining hall. The guest facility plays host to important events and special guests.





## Gnana Sabai

Arutchelvar Ayya was an ardent follower of Vallalar Perunthagai and believed in the oneness of God in the form of a Jyoti. A space is created in the Mahalingam Vigyan Bhavan to function as a meditation centre, named "Gnana Sabai". It is situated over an area of 2260 square feet. With a serene atmosphere, Gnana Sabai remains open for anyone who wants to practice mental stillness and relaxation through meditation. The centre is designed to offer an ambiance for one to indulge in mindfulness and connect with the inner self. An eternal Jyoti will light the meditation centre which symbolises that God is one.

## Life @ KCLAS

### PUTTING STUDENTS FIRST

KCLAS strives to augment the quality of life of the students by sowing the seeds of quest for Knowledge, Character and Transformation. In the campus there are opportunities galore to hallmark their individuality and are respected, mentored along with great networking and possibilities. An epitome of excellence, this campus makes them individuals of dignity and helps them become what they want to be.

A student's life at KCLAS is largely taken care by the Campus Central, officially called the Office of Student Affairs. It is a one - stop connection for all student needs and creates the best possible college life for each student. The team of people here ensure that the students are heard, answered and they strike neutrality. They recognize that every student is unique and kindle the right spark that keeps them highly charged and motivated from within for life.

With this they also work for the development of an engaged community comprising of students, faculty, parents and alumni where meaningful and authentic exchanges are valued. They facilitate programmes that foster the progress of students in personal well-being, personality development, extra curricular, co curricular and curricular activities. Addressing grievances is an art of sensitivity and this team performs this art at its best, leading to a meaningful long term relationship with students, parents, faculty and alumni.



## Clubs

### Arts

The art forms such as fine arts, music and dance are given a salient space, with clubs of their own - [Fine arts club](#), [Dance club](#), [Music club](#) and [Drama troupe](#). These clubs create opportunities for the admirers of dance, music, drawing, painting, embroidery, ornament crafting etc., to unveil their skills and the creator in them. The activities, workshops and initiatives that happen in the club are woven to develop the creator's creativity, aesthetic sense and the intellectual content, further. The beauty of identifying, developing and sharpening such skills is that, it doesn't stop with fine arts, music and dance alone. They disseminate into other areas of their life, thereby making them significantly conspicuous.

### Literary

Clubs named Sahitya, Qubate, Humor and Tamil Mandram is a promising platform for the students to cultivate a passion for literature, creative writing, quizzing, debating, etc. Through their journey in these clubs, students become independent thinkers, learn to have opinions, stage them, become inquisitive about opinions of others, explore other facets of their own personalities and become speakers and writers of conscience.

### Social

Youth Red Cross club, Red Ribbon club, Volunteer Blood Donation club, Gandhian Youth Movement, Vivekananda Youth Movement, Nature club, Rotaract club, Road Safety Patrol, Manavalakalai Mandram - these clubs in the college are dedicated to the grass root work in the society. They become the foundation of such social exposures to most students. This is where they see, hear and feel some of the most hard realities of life of people next door and they also rise up to realise their social responsibilities.

### Nature

A club for nature loving community in KCT was started in the year 2009. The club engages its members in eco-activities, thus moulding their lifestyle to live in harmony with nature. This club inculcates a sense of self - discipline and promotes leadership excellence in every member. The KCT Nature Club is backed up by a team of eco-warriors in the planning and execution of its activities.

## Mental and Physical Wellbeing

Every child born on this earth is skilled in his or her own way. At a certain age it's left to the mentors, guides to appreciate this fact and groom them. We in KCLAS value this deeply. In the light of this, we constantly work towards shaping us to suit every student; identify their strengths and help them capitalize it. And with this we believe they rise up to realising their dreams. To facilitate their wellbeing we have tailored two services that is driven to the motto of 'Students first'.

### Igniting young minds

#### Mentorship

Mentoring at KCLAS is envisaged to enable professional socialization and personal support to facilitate success. It foresees a holistic development of the student and helps him set a goal of clarity and enable him to achieve.

With the advent of technology, students today are exposed to new information and ideas constantly. Sometimes this could be an overdose of information and they battle with ideas not knowing what to do next or how to do it. Having to make good decisions is very critical to success. And it is a skill that comes with having high clarity. Mentors at KCLAS are well versed in this and in fine tuning the path for the students.

A mentor at KCLAS will wear several hats over the course of his or her students' professional development - he is a skill consultant who sharpens his mentee's intellectual and professional skills, a career consultant who helps the mentee see a diverse view of his career. The guidance goes beyond this and the mentor stays as a pillar of strength for the students and they have proved their mentorship to nurture the students for a class apart.

### Sowing seeds of care and hope

#### Counseling

Counseling for personal well-being is yet another active forum in KCLAS where the student guidance process takes place in a one-to-one and confidential environment. The counselor who is highly empathetic assists the students in the areas of their need. Students find the discussions with the counsellor very useful as the sessions take care of the intentions of the students and motivates them accordingly. They are guided on different perspectives and with a non-judgemental attitude, thus leading them to find a solution on their own.





Involving in a physical activity is a point of crux where the individual is moulded for a holistic wellbeing and in KCLAS, the holistic well being of each student is assured also through sports and other forms of physical activities.



## Sports

Academics achievements and sporting excellence are synchronous in KCLAS. The sports facilities on the campus is conducive to any kind of sports.

### Outdoor

In the sprawling ground of 23 acres various sports activities such as, Football, Hockey, Cricket, Basket ball, Volley Ball, Ball badminton, Kabaddi, Tennis, Handball, Kho-Kho, Throw ball and outdoor Gymnasium find their enthusiastic players. This sports ground goes through regular maintenance to support and encourage the sportsmen and sportswomen of the college.



## Indoor

### Martial Arts

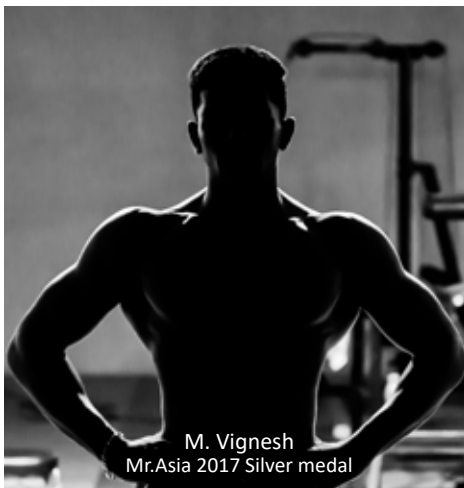
The Hall of Martial Arts of KCLAS trains the students on a variety of martial art forms such as Wushu, Karate, Silambam, Fencing and Boxing. Performing martial arts prepares the students' mind and body for a self paced steady growth.

The beauty of students getting trained in yoga and martial arts while studying here is that, they are able to strike a mental balance with a series of academic activities they go through and their performance reflects this.



### Kraft

The gym named KRAFT resonates a healthy mind in a healthy body. The significance of KRAFT is that it is in-door and spreads over an area of 2400 sq ft. The gym equipments are well tested, maintained and adhere to the international standards. This in-door unit is separate for men and women users.



M. Vignesh  
Mr.Asia 2017 Silver medal

### Badminton courts

Dr. Arumugam Study centre houses six badminton courts. It attracts a lot of players and has seen a large number of great players.

### Yoga

Yoga, an alternative medicine for health and fitness, is open to students who wish to learn the art of being in the pink of physical and mental health. The impact of putting themselves through this has been highly positive and rewarding and thus the college makes the best Yoga training possible for the students. the KCLAS population and others various kinds of Yoga programs year round to experience the goodness and benefits of Yoga practice.

### Dr. N.Mahalingam Chess Academy

Chess is considered a game of critical thinking and creative problem solving. Dr. N.Mahalingam Chess Academy bolsters the skills of the chess talents in the college through chess coaching camps, practice sessions and tournaments, making them prodigies.





## Resident Life

Life in the campus of Kumaraguru is delightful! KCLAS resident halls are an integral part of the college campus and strives to make the students' living and learning experience as seamless as possible. Living on the campus puts the students within walking distance of campus resources including classes, office of faculty, dining, recreation facilities, sports fields and the library.

As the first from the liberal arts domain, we never felt the partition between the engineers and ourselves during our hostel stay. The environment in the hostel helps me to forget home and stay at ease. The facilities available to the hostellers provides me the good character and atmosphere. The pleasure of enjoying the nature and myself, stays at an aura of great ambience. The morning blissfulness and the evening walking-on-air mood rejuvenates me whenever I am down of energy. Attending gym in the morning, having home-like food, practicing my favorite sport, evening fun with pals are memories that will stay forever. Since I am pursuing coaching for the CA exams, the environment in the hostel gives me the independence to prepare at the best for such exams. The Hub, K's Copy and K's Café are at their best in providing services. To summarize, Kumaraguru hostels provides me everything more than I wanted and its being the best till now, also forever.

**Pranav Krishna M**

I have stereotyped 'hostel experience', in a negative way. But KCLAS hostel proved it wrong. Parents need not reiterate 'feel at home', you yourself after couple of days start perceiving it as home. With numerous opportunities arriving at you on a platter, staying in the hostel only helps you improvise and succeed. Staying in the hostel gives me ample time to experiment and rediscover the photographer within me. Caring warden, toothsome food, gym and much more only adds to the experience. I may sound boastful, well that is true and I take pride as an hosteller at KCLAS.

**Divya Prabha T**





## Department of Human Excellence

The Department of Human Excellence functions with a mission to impart knowledge on ethics, Indian culture, spiritual principles and values in a modern idiom to the youth through a scientific and rational approach. It offers a one-credit mandatory course on values for all UG programmes.

### Mahatma Gandhi Study Centre

The centre focuses on a generous education on Gandhian principles through lectures and programmes. These inspirational lectures, aiming to pass down the values and thoughts of this great leader, are open to students, faculty and others. Mahatma Gandhi study centre has a vivid collection of Gandhian books and a photo gallery that leaves the viewer amazed and indebted to the Father of the nation. The centre also reaches out to social work through its Gandhian Youth Movement wing.

#### Mahatma Gandhi Study Centre





Swami Vivekananda Study Centre

## Vivekananda Study Centre

**'Arise, awake and stop not until your goal is reached'**  
- Swami Vivekananda.

He has been a way of life for many across the world for over 12 decades and his preachings have been a path to transformation. Vivekananda Study centre aims at bringing the evolution of responsible citizens by adhering to the aim of building a nation with responsible citizens. It is achieved through clear objectives. The centre's activities revolve around creating an enlightened youth, empowering them, channelling their energy towards character building and thereby enriching the nation.



## Building Leadership

At the heart of every moment that leads to a revolution, there are connecting strings of stories that tie people from different walks of life together - stories of heroes, stories of love, compassion and need. And it is from these stories that communities build up to support each other, stories from the blood and nerve of strong communities. Shakespeare shaped thinking of mankind for centuries with meaningful fables. And in KCLAS, this is what drives us.

We craft students to become stories of transformation and inspiration and tie them together to deliver an aura and charisma wherever they are. And, the Super60 and the Leadership Council initiatives for students carefully chisels their statue to beauty.





Super60 is a league of aspiring students, trained and mentored for excellence, surpassing ordinary standards. Selection of students for this tailor made programme focuses on testing their level of perseverance, diligence over the academic scores. The Super60 programme, hands-down helps these self-motivated and visionary individuals to transform and make an impact on the society.



Leadership Council is an advisory body comprising student presidents of all academic departments, heads of student clubs, sports captains and NCC student officers. The purpose of the council is to facilitate students in curricular, co-curricular and extracurricular activities and resolve student issues. The council works with the management of KCLAS to make the student experience in the campus holistic. They also contribute to decisions based on institution's reformation.



# Pursuing Excellence

## Kumaraguru Achievers Award

The extraordinary achievements of the students of various categories and career domains are recognised every year with Kumaraguru Achievers Award. The outstanding performers of the passing out batches are awarded for their work in academics, sports, research and innovation. The Best Outgoing Student of the Year award is the most prestigious student recognition in Kumaraguru. Students are recognised for their hard work, dedication and achievement. The various endowment awards sponsored by Industries, Alumni and other Patrons are also given away to the students. Best volunteers of various Clubs, Forums and Organizations in Kumaraguru are also recognised.

## List of Awards

Kumaraguru Special Award  
 Special Recognition Award  
 Club Awards  
 Best Project Award  
 Best Outgoing Student Award

## KCLAS Scholarships

Generous Scholarships are available for students entering into KCLAS or progressing in the programs pursued at KCLAS. Scholarship are given in the form of (1) tuition fee waiver (full/ partial) (2) sponsorship for optional benefits.

### KCLAS Merit Scholarship

Merit scholarships are often related to academic performance, but can also be given to a candidate displaying exceptional artistic success and skill, or even a combination of both.

### KCLAS Sakthi Grant

These need-based scholarships are designed to provide assistance for studies when students or their guardians are not able to afford tuition and fees.

### KCLAS Sports Scholarship

Sports scholarships are awarded to students based on their performance in sports in the National/International levels.

### KCLAS Military Grant

These are awarded to the students whose parent is a in service member or a veteran of Air Force, Army, Coast Guard, Navy, BSF, RAF or Police.

### KCLAS MG Award

These are awarded to students who excel in academics during the period of study.





## Mahatma Gandhi Scholarship

Meritorious students are awarded the Mahatma Gandhi Scholarship, every year. Mahatma Gandhi Scholarship was ideated by Arutchelvar Dr.N.Mahalingam who valued the pursuit of merit, perseverance and achievement greatly in students and was keen on nurturing these attributes in them. The parents of award-winning students are also invited to be a part of this prestigious scholarship awarding event. Kumaraguru has been encouraging similar talents for over 10 years by conferring 800 million Rupees to almost 8000 students through Mahatma Gandhi Scholarship.



## International Partnerships

The international Programmes at Kumaraguru are aimed at broadening the scope of education, creating opportunities for higher education and research and enhancing the career potentials of students. Working with partners in North America, Europe, Asia, Africa and Australia, KCT offers the following Programmes:

- Short term academic Programmes in partner universities in the USA, Europe and Asia
- Summer Programmes, Study Abroad Programmes, Twinning Programmes and Internships in partner institutions around the world
- Exchange Programmes for Kumaraguru and partner university students
- Exchange and sabbatical Programmes for faculty and visiting scholars associated with Fulbright and other international Programmes
- Institutional / Industry Partner Programmes in Africa and the Middle East



## International Associations

### USA

State University of New York  
University of Michigan-Dearborn  
Rochester Institute of Technology  
California State University  
Louisiana State University  
Princeton University  
Cornell University  
Texas Tech University  
Oklahoma State University  
Northern Illinois University  
Indiana University - Purdue University Indianapolis

### UNITED KINGDOM

Leeds University  
Cranfield University  
Birmingham City University  
Manchester Metropolitan University  
University of Birmingham  
Nottingham Trent University

### CHINA

Neusoft University

### MALAYSIA

Tenaga Nasional University  
HELP University

### TAIWAN

National Dong HWA University

### AUSTRALIA

Royal Melbourne Institute of Technology  
University of Sydney  
Flinders University  
Swinburne University

### CZECH REPUBLIC

Technical University of Liberec

### GERMANY

RWTH Aachen University

### ISRAEL

Tel Aviv University

### NEW ZEALAND

Ara Institute of Canterbury

### THE NETHERLANDS

Maastricht School of Management

### SINGAPORE

Management Development Institute

## Pathway to a Promising Future

**The Office of Career Development** helps the students lay a clear road map to their future. Students, from the onset of their journey at Kumaraguru, are taken through a carefully engineered process of preparation for a smooth take off after their education in college. This pathway gives them a leverage of time, to choose their cup of tea. In summary, the programmes in this unique process aim at imparting the right tools and techniques to strengthen their capabilities in three core areas; self-awareness, clarity and employability. Underpinning these capabilities empower them to create new opportunities of their own, utilize the existing ones, accelerate their growth and reach newer heights of success. To name a few, there are programmes on career guidance that are directed towards creating opportunities for the students to become acquainted to a wide range of occupational and educational opportunities, programmes on soft skills development that are designed to help them develop a cutting-edge personality.

Students find their future in the following pathways.

### Higher Education

#### India / Overseas

For those students who want to fathom their areas of study through a masters degree in a National or an International university, prior to a career, the college on its campus facilitates classes on GRE, TOEFL and IELTS.

#### Foreign Languages

With education and businesses expanding globally, being able to handle a foreign language helps the student meet diversity. To support this, KCT facilitates classes on Japanese and French languages, on campus.

### Entrepreneurship

#### Family Business

Entrepreneurship runs in the veins of students who come from a family business background. If family business connections exists, a student can build on that firm foundation and grow a new business out from the family business. Family Business Forum encourages and supports students in this path through courses, mentoring, peer network and connecting with the family business board. Partnerships and associations with organizations like Family Business Network [www.fbn-i.org](http://www.fbn-i.org) offers several opportunities for students who aspire to build their own family business.

#### Start ups

Kumaraguru is known among the students as a place where the entrepreneurial side of theirs is tapped and ideas are welcomed with open hands. The Forge in KCT is where the ideas of aspiring student entrepreneurs are incubated and launched.



## Civil services

Students of Kumaraguru also appreciate that their education could also be poured into civil services sector. For the students who aspire to be bureaucrats, the college facilitates classes on UPSC and TNPSC, on campus.

## Employment

For those students who want to start their career as a professional in industries, corporates and companies right after their college education, KCLAS offers a competent spread of opportunities through its placement services.





Namma Café, an eating joint where around 2000 students and faculty visit every day.



Nigal, the video club that does video production and media coverage for various social events and in-house projects.



Studio KCT, the official photography club of KCT is the path to ponder into photography. The idea is to offer students a way to discover and to learn more about the mysteries of visual perception. It is a sanctuary of young minds who capture moments to memories.



Olipadi, a start-up that meets the reprographic needs inside the campus.



Munch Box, a cafe run by KCT Business School students as an entrepreneurial initiative.

**Kumaraguru's enterprising student entrepreneurs have ventured into various initiatives, each one of it being their brainchild.**



## Faculty



**Dr. Vijila Kennedy**  
Principal



**Dr. S.Venugopal**  
Associate Professor



**Dr. Vinay Kumar Changati**  
Professor



**Dr. K.Manjula Bashini**  
Associate Professor



**Dr. R.Radhika**  
Associate Professor



**Mr. C.Rahuram**  
Assistant Professor



**Dr. G.Suresh Kumar**  
Assistant Professor



**Mr. P. Prasanna**  
Associate Professor



**Mr. Vijay Srinivasan**  
Assistant Professor



**Dr. R.Rupa**  
Associate Professor

## Unveiling a distinct liberal arts learning experience

KCLAS has developed the academic programme based on building the 21st Century skills - Model of Boston Consulting Group (BCG) and World Economic Forum (WEF). To thrive in today's innovation-driven economy, workers need a different mix of skills than in the past. In addition to foundational skills like literacy and numeracy, they need competencies like collaboration, creativity and problem-solving and character qualities like persistence, curiosity and initiative. Changes in the labour market have heightened the need for all individuals, to have these skills. In countries around the world, economies run on creativity, innovation and collaboration. Skilled jobs are more and more centred on solving unstructured problems and effectively analysing information.

KCLAS focuses its academics, co-curricular and extra-curricular initiatives to enhance the students' skills.

## KCLAS Programmes

### School of Commerce and Business

**B.Com**

**B.Com (Professional Accounting)**

**BBA**

### School of Literature and Visual Art

**BA English Language Literature**

**BSc Visual Communication**

### School of Formal Sciences

**BSc Mathematics**

### School of Social Sciences

**BA Political Science**

**BSc Psychology**

**Master of Social Work**

### UG Programmes overview

#### I Year - Foundation

Focuses on self-awareness, critical thinking, communication skills and fundamental domain knowledge.

#### II Year - Exploration

Building leadership skills and a broader knowledge & exposure in the major area and beyond.

#### III Year - Integration

Apply their knowledge and skills, working in interdisciplinary ways to solve problems.



# COMMERCE

## SCHOOL OF COMMERCE AND BUSINESS

**B.Com. Professional Accounting**  
*CA/ CS/CMA path*

**Bachelor of Commerce\***  
*CA/CS/CMA*

**Bachelor of Business Administration**  
*Integrated Entrepreneurship path*

# COMMERCE

## B.COM. PROFESSIONAL ACCOUNTING

### **Eligibility**

H.S.C. Passed in III group –  
Commerce, Accountancy, Mathematics/ Computer science

### **Integrated Programme**

Pursue professional courses such as  
CA, CS, CMA (INDIA), CIMA and ACCA

### **Career Paths**

The 3-year professional Undergraduate course in Business Management open numerous career options in the corporate world.

A graduate in this course has the option of exploring numerous job opportunities in a plethora of sectors like management, marketing, education, finance, sales, and government to name just a few.



## B.Com. Professional Accounting

**Professional Accounting** course is designed to provide the students with a comprehensive understanding of accounting, including the professional knowledge and standards required for industry membership and advancement. The student will learning will extend beyond balance sheets and budget preparation as they develop the practical and analytical skills that will allow them to understand and interpret important financial information.

Semester I	Semester II	Semester III	Semester IV	Semester V	Semester VI
Language-I English-I  <b>CORE</b> Principles of Accountancy, Intro to IT, Practical-IMS Office  <b>ALLIED</b> Mathematics for Business  <b>VALUE EDUCATION</b> Environmental Studies	Language-II English-II  <b>CORE</b> Mercantile Law, Computer Application Practical-I (MS Office)  <b>ALLIED</b> Statistics for Business  <b>VALUE EDUCATION</b> Human Rights	<b>CORE</b> Industrial Law, Strategic Management, Cost Accounting, Practical - Oracle  <b>ALLIED</b> Managerial Economics  <b>SKILL BASED COURSE</b> Principles of Marketing Tamil / Advanced Tamil (or) Yoga for Human Excellence/ Women Rights, Constitution of India	<b>CORE</b> Advanced Accounting I, Management Accounting, Executive Business Communication, Practical (Oracle & C++)  <b>ALLIED</b> Principles of Management  <b>SKILL BASED COURSE</b> Company Law, Tamil @ /Advanced Tamil (or) General Awareness	<b>CORE</b> Advanced Accounting-II, Auditing and Assurance- I, Principles of Auditing, Direct Tax-I, Direct Tax-II  <b>ELECTIVE-I</b>  <b>SKILL BASED COURSE</b> Banking and Insurance Law	<b>CORE</b> Corporate Accounting, Auditing and Assurance-II, Service Tax and VAT  <b>ELECTIVE -II</b> <b>ELECTIVE -III</b>  <b>SKILL BASED COURSE</b> Cyber Law, Extension Activities

### List of Elective Papers

Elective – I	Financial Management / Entrepreneurial Development / Micro Finance
Elective – II	Business Finance / Brand Management / Supply Chain Management
Elective – III	Investment Management / Financial Markets / Project Work & Viva-Voce

### PROGRAMME FEATURES

Semester I	EDGE [Domain Related]	EDGE+
Sem 1	<ul style="list-style-type: none"> <li>Field study – All Courses</li> <li>Course related Guest Lectures</li> <li>Certificate Programme on Advanced Excel</li> <li>Study visits to SMEs</li> <li>On-line courses – Accounting &amp; Informational Technology</li> <li>Workshop on Environmental studies</li> <li>Volunteering for teaching/ tuition for schools</li> </ul>	<ul style="list-style-type: none"> <li>ICAI, CMA, ICSI, ACCA, CIMA (Foundation Level)</li> <li>BFSI Certificate course</li> <li>Swayam / NPTEL Courses</li> </ul>
Sem 2	<ul style="list-style-type: none"> <li>Field Study – All Courses</li> <li>Course related Guest Lectures</li> <li>Study visits to Court / Companies</li> <li>Certificate Course – Tally</li> <li>Google Certification Course</li> <li>On-line course – Accounting &amp; Marketing</li> <li>Workshops on Live trading</li> <li>Internship</li> </ul>	<ul style="list-style-type: none"> <li>ICAI, CMA, ICSI, ACCA, CIMA (Foundation Course)</li> <li>International Summer School</li> <li>National Study visit – Cochin port</li> <li>Swayam / NPTEL Courses</li> <li>BFSI Certificate course</li> <li>Certificate Programme in Business skills (6 months) through IGNOU</li> </ul>
Sem 3	<ul style="list-style-type: none"> <li>Field Study – All courses</li> <li>Course Related Guest talk</li> <li>Study visit to Companies</li> <li>On-line course – Retail business &amp; Strategic management</li> <li>Certificate Programme – Stock Market Practices</li> <li>Research Paper/ case studies presentation and Publications</li> <li>Soft Skill Training</li> </ul>	<ul style="list-style-type: none"> <li>ICAI, CMA, ICSI, ACCA, CIMA (Inter / Executive level)</li> <li>Swayam / NPTEL Courses</li> <li>Diploma in IFRS</li> <li>NCFM certificate Module (Financial Market, Mutual Fund, Commercial Banking)</li> </ul>
Sem 4	<ul style="list-style-type: none"> <li>Field Study – All courses</li> <li>Course Related Guest talk</li> <li>Study visit to Companies</li> <li>On-line course</li> <li>Research / Case studies presentation and publication</li> <li>Certificate Programme in General Insurance from IFBI</li> <li>Workshop on Corporate Governance</li> <li>Institutional Training</li> </ul>	<ul style="list-style-type: none"> <li>ICAI, CMA, ICSI, ACCA, CIMA (Inter / Executive level)</li> <li>National Study visit – Bombay Stock Exchange</li> <li>Swayam / NPTEL Courses</li> <li>International Summer School</li> <li>NCFM certificate Module (Banking sector, Insurance sector, Investment analysis and Portfolio management)</li> </ul>
Sem 5	<ul style="list-style-type: none"> <li>Field Study – All courses</li> <li>Course Related Guest talk</li> <li>Study visit to Companies</li> <li>On-line course</li> <li>Research / Case studies presentation and publication</li> <li>Certificate Programme (Licensiate) from Insurance Institute of India</li> <li>Workshop on GST</li> <li>Workshop on Research methodology</li> </ul>	<ul style="list-style-type: none"> <li>ICAI, CMA, ICSI, ACCA, CIMA (Final / Professional level)</li> <li>Certificate Programme from NMIMS</li> <li>NCFM certificate Module (Project Finance, Wealth Management, Back Office operation)</li> <li>Swayam / NPTEL Courses</li> </ul>
Sem 6	<ul style="list-style-type: none"> <li>Field Study – All courses</li> <li>Course Related Guest talk</li> <li>Study visit to Companies</li> <li>On-line course</li> <li>Research / Case studies presentation and publication</li> <li>Certificate Programme from Indian Institute of Banking and Finance</li> <li>Workshop on Personal finance &amp; Financial freedom</li> <li>Project Work</li> </ul>	<ul style="list-style-type: none"> <li>ICAI, CMA, ICSI, ACCA, CIMA (Final / Professional level)</li> <li>Swayam / NPTEL Courses</li> <li>Certificate Programme – AXIS, ICICI, Kotak</li> <li>Certificate course – Manipal University</li> </ul>





# BACHELOR OF COMMERCE

## **Eligibility**

A pass in HSC  
from Commerce, Accountancy, Maths/ Computer science Stream.

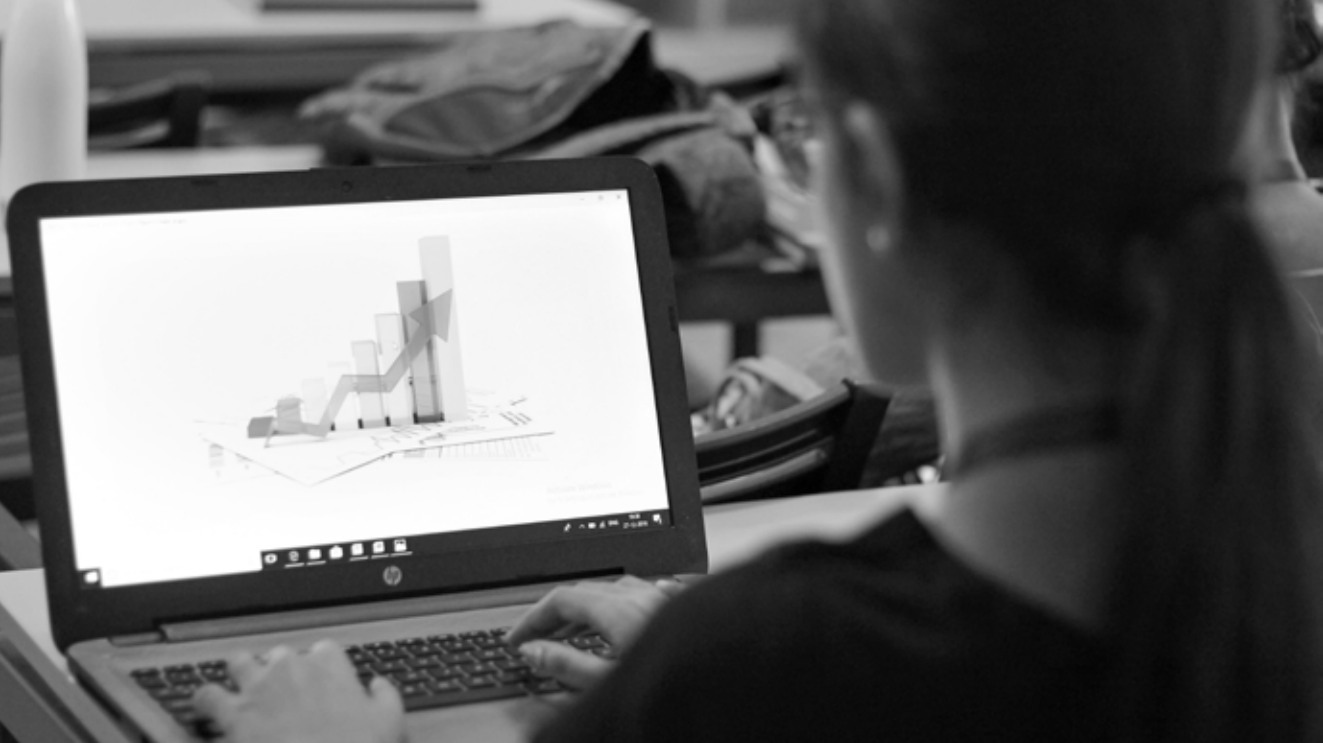
## **Integrated Programme**

Pursue professional courses such as  
CA, CS, CMA (INDIA), CIMA and ACCA

## **Career Paths**

The 3-year professional Undergraduate course in Business  
Management open numerous career options in the corporate world.

A graduate in this course has the option of exploring numerous job  
opportunities in a plethora of sectors like management, marketing,  
education, finance, sales, and government to name just a few.



## Bachelor of Commerce

**Commerce** courses aims at preparing students to take up challenging careers in commerce, finance, taxation, accountancy and other related disciplines of business studies. The Programme imparts strong subject matter expertise by focusing on the learning that includes the knowledge of basic theories, principles, methods and procedures of commerce and accounting. The B.Com & B.Com PA graduates also has opportunities to pursue professional courses such as CA, CS, CMA (INDIA), CIMA and ACCA etc.

Semester I	Semester II	Semester III	Semester IV	Semester V	Semester VI
Language-I English-I	Language-II English-II	<b>CORE</b> Higher Financial Accounting, Commercial Law, Principles of Management	<b>CORE</b> Corporate Accounting-I, Computer Applications in Business, Company Law and Secretarial Practice, Executive Business Communication, Banking Theory	<b>CORE</b> Corporate Accounting-II, Banking Law and Practices, Cost Accounting, Income Tax Law and Practice	<b>CORE</b> Management Accounting, Principles of Auditing, Indirect Tax
<b>CORE</b> Principles of Accountancy, Business Organization & Office Management	<b>CORE</b> Financial Accounting, Principles of Marketing	<b>ALLIED</b> Mathematics for Business	<b>ALLIED</b> Statistics for Business	<b>ELECTIVE –I</b>	<b>ELECTIVE –II</b> <b>ELECTIVE –III</b>
<b>ALLIED</b> Agricultural Economic of India	<b>ALLIED</b> Economic Analysis	<b>SKILL BASED COURSE</b> Business Application Software-I	<b>SKILL BASED COURSE</b> Computer Applications (MS-Word and MS-Excel)-Practical –I	<b>SKILL BASED COURSE</b> Business Application Software-II	<b>SKILL BASED COURSE</b> Computer Applications: MS-PowerPoint, MS-Access and Tally 9.2 -Practical-II
<b>VALUE EDUCATION</b> Environmental Studies	<b>VALUE EDUCATION</b> Human Rights	<b>NON-MAJOR ELECTIVE –I</b> Yoga for Human Excellence/ Women's Rights, Constitution of India.	<b>NON-MAJOR ELECTIVE –I</b> General Awareness		<b>SKILL BASED COURSE</b> Extension Activities.

### List of Elective Papers (colleges can choose any one of the paper as electives)

Elective – I	Business Finance / Brand Management/ Fundamentals of Insurance
Elective – II	Entrepreneurial Development/Supply Chain Management/Principles of Web Designing
Elective – III	Financial Markets/Insurance Legislative Framework/Project Work

### PROGRAMME FEATURES

Semester I	EDGE [Domain Related]	EDGE+
Sem 1	<ul style="list-style-type: none"> <li>Field study – All Courses</li> <li>Course related Guest Lectures</li> <li>Certificate Programme on Advanced Excel</li> <li>Study visits to SMEs</li> <li>On-line courses – Accounting &amp; Informational Technology</li> <li>Workshop on Environmental studies</li> <li>Volunteering for teaching/ tuition for schools</li> </ul>	<ul style="list-style-type: none"> <li>ICAI, CMA, ICSI, ACCA, CIMA (Foundation Level)</li> <li>BFSI Certificate course</li> <li>Swayam / NPTEL Courses</li> </ul>
Sem 2	<ul style="list-style-type: none"> <li>Field Study – All Courses</li> <li>Course related Guest Lectures</li> <li>Study visits to Court / Companies</li> <li>Certificate Course – Tally</li> <li>Google Certification Course</li> <li>On-line course – Accounting &amp; Marketing</li> <li>Workshops on Live trading</li> <li>Internship</li> </ul>	<ul style="list-style-type: none"> <li>ICAI, CMA, ICSI, ACCA, CIMA (Foundation Course)</li> <li>International Summer School</li> <li>National Study visit – Cochin port</li> <li>Swayam / NPTEL Courses</li> <li>BFSI Certificate course</li> <li>Certificate Programme in Business skills (6 months) through IGNOU</li> </ul>
Sem 3	<ul style="list-style-type: none"> <li>Field Study – All courses</li> <li>Course Related Guest talk</li> <li>Study visit to Companies</li> <li>On-line course – Retail business &amp; Strategic management</li> <li>Certificate Programme – Stock Market Practices</li> <li>Research Paper/ case studies presentation and Publications</li> <li>Soft Skill Training</li> </ul>	<ul style="list-style-type: none"> <li>ICAI, CMA, ICSI, ACCA, CIMA (Inter / Executive level)</li> <li>Swayam / NPTEL Courses</li> <li>Diploma in IFRS</li> <li>NCFM certificate Module (Financial Market, Mutual Fund, Commercial Banking)</li> </ul>
Sem 4	<ul style="list-style-type: none"> <li>Field Study – All courses</li> <li>Course Related Guest talk</li> <li>Study visit to Companies</li> <li>On-line course</li> <li>Research / Case studies presentation and publication</li> <li>Certificate Programme in General Insurance from IFBI</li> <li>Workshop on Corporate Governance</li> <li>Institutional Training</li> </ul>	<ul style="list-style-type: none"> <li>ICAI, CMA, ICSI, ACCA, CIMA (Inter / Executive level)</li> <li>National Study visit – Bombay Stock Exchange</li> <li>Swayam / NPTEL Courses</li> <li>International Summer School</li> <li>NCFM certificate Module (Banking sector, Insurance sector, Investment analysis and Portfolio management)</li> </ul>
Sem 5	<ul style="list-style-type: none"> <li>Field Study – All courses</li> <li>Course Related Guest talk</li> <li>Study visit to Companies</li> <li>On-line course</li> <li>Research / Case studies presentation and publication</li> <li>Certificate Programme (Licensiate) from Insurance Institute of India</li> <li>Workshop on GST</li> <li>Workshop on Research methodology</li> </ul>	<ul style="list-style-type: none"> <li>ICAI, CMA, ICSI, ACCA, CIMA (Final / Professional level)</li> <li>Certificate Programme from NMIMS</li> <li>NCFM certificate Module (Project Finance, Wealth Management, Back Office operation)</li> <li>Swayam / NPTEL Courses</li> </ul>
Sem 6	<ul style="list-style-type: none"> <li>Field Study – All courses</li> <li>Course Related Guest talk</li> <li>Study visit to Companies</li> <li>On-line course</li> <li>Research / Case studies presentation and publication</li> <li>Certificate Programme from Indian Institute of Banking and Finance</li> <li>Workshop on Personal finance &amp; Financial freedom</li> <li>Project Work</li> </ul>	<ul style="list-style-type: none"> <li>ICAI, CMA, ICSI, ACCA, CIMA (Final / Professional level)</li> <li>Swayam / NPTEL Courses</li> <li>Certificate Programme – AXIS, ICICI, Kotak</li> <li>Certificate course – Manipal University</li> </ul>





# BACHELOR OF BUSINESS ADMINISTRATION

## **Eligibility**

A pass in HSC from any stream

## **Integrated Programme**

Entrepreneurship

## **Career Paths**

The 3-year professional Undergraduate course in Business Management open numerous career options in the corporate world.

A graduate in this course has the option of exploring numerous job opportunities in a plethora of sectors like management, marketing, education, finance, sales, and government to name just a few.



## Bachelor of Business Administration

**Business Administration** course offers knowledge about management and leadership skills and hones an individual's talent to enter the business world as entrepreneurs or managers. The Programme will provide a student with conceptual, theoretical and practical knowledge in various aspects of business like finance, economics, operations, marketing, basic accounting etc. The students in this field get the practical exposure through trainings, projects and industrial visit.

Semester I	Semester II	Semester III	Semester IV	Semester V	Semester VI
Language-I English-I  <b>CORE</b> Principles of Management, Basics of Business and Business Environment  <b>ALLIED</b> Mathematics for Management -I, Value Education, Environmental Studies	Language-II English-II  <b>CORE</b> Organizational Behavior, Economics for Executives  <b>ALLIED</b> Mathematics for Management –I  <b>VALUE EDUCATION</b> Human Rights	<b>CORE</b> Financial Accounting Production and Material , Management Marketing Management Practical: PC Software (MS Office )  <b>ALLIED</b> Business Law  <b>SKILL BASED COURSE</b> Communication Skills I, Tamil @ /Advanced Tamil # (or) Yoga for Human Excellence / Women Rights, Constitution of India	<b>CORE</b> Human Resource Management, Financial Management, Financial Accounting Package – Tally (Practical), Management Information System  <b>ALLIED</b> Taxation Law and Practice  <b>SKILL BASED COURSE</b> Communication Skills II, Tamil @ / Advanced Tamil (or) General Awareness	<b>CORE</b> Cost & Management Accounting, Research Methods for Management, Advertising and Sales Promotion, Business Correspondence  <b>SKILL ENHANCER</b> Institutional Training  <b>ELECTIVE –I</b>  <b>SKILL BASED</b> course Campus to Corporate	<b>CORE</b> Entrepreneurship and Small Business Management, Investment Management, Services Marketing  <b>ELECTIVE –II</b> <b>ELECTIVE –III</b>  <b>SKILL BASED COURSE</b> Soft Skills for Business Extension Activities

List of Elective Papers	
Elective – I	Intellectual Property Rights / Modern Office Management / Company Law and Secretarial Practice / Customer Relationship Management
Elective – II	Banking Law and Practice / Industrial Relations and Labour Laws / Insurance Principles and Practice/Consumer Behaviour
Elective – III	IE-Commerce / Project Work & Viva-Voce / Financial Services / Global Business Management

### PROGRAMME FEATURES

Semester I	EDGE (Start-up/ Family Business)	EDGE+ (Certificate/Diploma/ Value Add Programme's)
Sem 1	<ul style="list-style-type: none"> <li>Start Up Talk Series</li> <li>Family Business Talk Series</li> <li>Design Thinking</li> <li>Psychometric Profiling</li> <li>Self Awareness Camp</li> <li>International On-line courses</li> </ul>	<ul style="list-style-type: none"> <li>Diploma in HRM (NMIMS)</li> <li>Certificate in Entrepreneurship (IGNOU)</li> </ul>
Sem 2	<ul style="list-style-type: none"> <li>Field Visits to Start Ups/ Family Businesses</li> <li>Understanding Family Businesses (Vision, shared values, Growth strategies)</li> <li>Understanding start-ups</li> <li>Start-up/ Family Business Challenge</li> <li>Internship – Work in Start-up/ Family Business/ Corporate</li> <li>International On-line courses on entrepreneurship</li> <li>Projects – Mapping the life story of entrepreneurs</li> </ul>	<ul style="list-style-type: none"> <li>India Study Visit</li> <li>Six Sigma Certificate course</li> <li>Pop-up Sales</li> <li>Certificate in Project Management (NMIMS)</li> <li>International Summer school with partner Universities</li> </ul>
Sem 3	<ul style="list-style-type: none"> <li>Ideation Lab: New Business Ideas/ Family Business: Professionalism, growth and Expansion Ideas</li> <li>Market research workshop</li> <li>Projects in FoB/ Start-ups</li> <li>Online Course on Innovation for Entrepreneurs (U-RWTH)</li> <li>Solve-a-thon</li> <li>Changing from Traditional to professional approach in family business</li> </ul>	<ul style="list-style-type: none"> <li>Diploma in Financial Management (NMIMS)</li> <li>Certification on Advanced Excel (Microsoft )</li> <li>Certification on Intellectual Property (FICCI)</li> <li>Diploma in Banking and Finance Management (NMIMS)</li> <li>Campus Start-ups</li> </ul>
Sem 4	<ul style="list-style-type: none"> <li>Workshop on Business Plan</li> <li>Business Plan – start-up/ family Business</li> <li>Certificate course on Tally</li> <li>Online Course on Family Business' Strategy Essentials (U-British Columbia)</li> <li>Community Engagement</li> <li>Career orientation</li> <li>Funding sources for entrepreneurs</li> </ul>	<ul style="list-style-type: none"> <li>Certificate in Corporate Communication (NMIMS)</li> <li>International Summer School</li> <li>Seed Project Challenge</li> <li>Certificate in Corporate Communication</li> <li>India Industrial Visit</li> <li>Higher Education Training (National/ International Universities)</li> </ul>
Sem 5	<ul style="list-style-type: none"> <li>Institutional Training</li> <li>Workshop on Project Management</li> <li>Campus to Corporate – Training</li> <li>Soft Skill for Business</li> </ul>	<ul style="list-style-type: none"> <li>Certification on IP Protection and Commercialization (FICCI)</li> <li>Diploma in Social Entrepreneurship (COISSA)</li> <li>Higher Education Training (National/ International Universities)</li> </ul>
Sem 6	<ul style="list-style-type: none"> <li>Workshop on Business Pitching</li> <li>Pitching to investors</li> <li>Pitching to FoB for growth strategies</li> <li>Community Engagement</li> <li>Career Readiness Programme</li> </ul>	<ul style="list-style-type: none"> <li>India Industrial Visit</li> <li>Higher Education Training (National/ International Universities)</li> <li>Short Training Programmes with EDII/ ISB</li> </ul>



# LITERAT

## SCHOOL OF LITERATURE AND VISUAL ART

**B.A. English Literature**  
*Journalism path*

**B.Sc. Visual Communication**  
*Animation and Graphic Design path*

# LITERATURE

## B.A. ENGLISH LITERATURE

### **Eligibility**

A pass in HSC from any stream

### **Career Paths**

Journalism



## B.A. English Literature

**English Literature** course comprises of literature from various era - Renaissance to the contemporary, countries - Anglo - Saxon period to American literary and cultural studies, spans novels, plays, poetry, fiction and essays. In the language part a student is required to learn comprehension, acquire basic knowledge of Rhetoric and Prosody and nuances of writing.

Semester I	Semester II	Semester III	Semester IV	Semester V	Semester VI
Language-I English-I	Language-II English-II	<b>CORE</b> Prose – II Fiction – II	<b>CORE</b> Poetry – II Drama –II	<b>CORE</b> Shakespeare – I Indian Writing in English American Literature, Commonwealth Literature	<b>CORE</b> Shakespeare – II Intensive Study of an Author – Tagore, Indian Literature in English Translation
<b>CORE</b> Prose 1 Fiction 1	<b>CORE</b> Poetry – I Drama – I	<b>ALLIED</b> Literary Forms	<b>ALLIED</b> Literary Criticism		
<b>ALLIED</b> Social History of England Environmental Studies	<b>ALLIED</b> History Of English, Literature	<b>SKILL BASED COURSE</b> Communicative English I Tamil @ /Advanced Tamil # (or) Yoga for Human Excellence / Women Rights, Constitution of India	<b>SKILL BASED COURSE</b> Communicative English -II	<b>ELECTIVE –I</b>	<b>ELECTIVE –II</b> <b>ELECTIVE –III</b>
<b>VALUE EDUCATION</b> Environmental Studies	<b>VALUE EDUCATION</b> Human Rights			<b>SKILL BASED COURSE</b> Communicative English -III	<b>SKILL BASED COURSE</b> Communicative English, Extension Activities

### List of Elective Papers

Elective – I	English for Competitive Exams / Study of Indian Theater / Public Speaking
Elective – II	Communicative English / Fundamentals of Comparative Literature / Writing Skills
Elective – III	Introduction to Linguistics / Studying Novels / Translation Tasks

### PROGRAMME FEATURES

Semester I	EDGE	EDGE+
Sem 1	<ul style="list-style-type: none"> <li>Workshop – An Introduction to Drama</li> <li>Guest Talks</li> <li>Online Courses</li> <li>English for Journalism – Pennsylvania University</li> <li>Study Visits –Heritage Walk</li> </ul>	<ul style="list-style-type: none"> <li>Certificate Programmeme in Functional English (Basic level) (CFE) – IGNOU , Rs.2,500 – 6mnths</li> <li>Workshop- Story Telling Workshop</li> </ul>
Sem 2	<ul style="list-style-type: none"> <li>Workshop –Blogging &amp; Vlogging</li> <li>Workshop – An introduction to puppetry</li> <li>Guest Talks</li> <li>Online Courses - Journalism, the future, and you! Michigan State University</li> <li>Field Project</li> <li>Internships</li> </ul>	<ul style="list-style-type: none"> <li>Toastmasters</li> <li>Helen O' Grady</li> <li>International Summer School</li> <li>Certificate Course in Content Writing- Henry Harvin Education</li> <li>Study Visits –Literature Festivals</li> <li>Exploring English Language and Culture – 4 Weeks (British Council)</li> </ul>
Sem 3	<ul style="list-style-type: none"> <li>Workshop - Soft skills</li> <li>Guest Talks</li> <li>Online Courses – Become a Journalist: Report the News! Specialization–Michigan State University</li> <li>Field Project</li> </ul>	<ul style="list-style-type: none"> <li>BEC – Preliminary</li> <li>Trollope, Eliot, Dickens and Hardy: Reading Victorian Fiction – Online Course</li> <li>(Oxford University) - 3 months</li> <li>English for the Workplace - 4 Weeks (British Council)</li> <li>Civil Services Preparation Classes</li> <li>Study Visit –Places of Literary importance</li> </ul>
Sem 4	<ul style="list-style-type: none"> <li>Workshop on Personality Development and Life skills</li> <li>Enhancing Soft Skills and Personality (NPTEL)</li> <li>Introduction to Literary Theory (NPTEL)</li> <li>Guest Talks</li> <li>Study Visit – Historical Significance</li> <li>Field Project</li> <li>Internships – (School Teaching)</li> </ul>	<ul style="list-style-type: none"> <li>BEC – Vantage</li> <li>Diploma in Creative Writing in English (DCWE) – Symbiosis Distance Learning</li> <li>Freelance and Feature Writing - The London School of Journalism</li> <li>How to succeed in Global workplace -4 Weeks (British Council)</li> <li>Civil Services Preparation Classes</li> <li>International Summer School</li> </ul>
Sem 5	<ul style="list-style-type: none"> <li>Workshop on Creative Writing</li> <li>Indian Fiction in English (NPTEL)</li> <li>Guest Talks</li> <li>Study Visit – Drama School</li> <li>Social Awareness Campaigns</li> <li>Field Projects</li> </ul>	<ul style="list-style-type: none"> <li>BEC – Higher</li> <li>Shakespeare (Online)</li> <li>(Oxford University) - 3 months 295 Pounds</li> <li>Journalism for Social Change – Edx - Berkeley, University of California</li> <li>Travel Writing -</li> <li>The London School of Journalism – 395pounds</li> <li>Civil Services Preparation Classes</li> </ul>
Sem 6	<ul style="list-style-type: none"> <li>Workshop on Writing Short Stories</li> <li>Introduction to Translation Studies (NPTEL)</li> <li>Guest Talks</li> <li>Study Visit – to writer's place</li> <li>Social Awareness Campaigns</li> <li>Field Projects</li> </ul>	<ul style="list-style-type: none"> <li>Diploma in English Language Teaching (DELT) – Symbiosis Distance Learning – (Rs.12,000)</li> <li>Civil Services Preparation Classes</li> <li>SportsWriting</li> <li>The London School of Journalism – 395pounds</li> <li>IELTS, TOEFL Training</li> </ul>





# B.Sc. VISUAL COMMUNICATION

## **Eligibility**

A pass in HSC from any stream

## **Integrated Programme**

Film making | Animation & Graphic Design | Photography

## **Career Paths**

Media professional in Print, TV, Radio, Cinema and Online | Film  
Director | Graphic designer | Sound Designer | Photographer |  
Photo Journalist | Public relation Officer | Ad Copy writer | Layout  
Artist | Video Editor | Cinematographer | Web Designer |  
Web Content writer



## B.Sc. Visual Communication

**Visual Communication** (popularly known as Viscom) is a well-crafted programme with a learner centric approach to unleash the creative potential within the students. The programme enables students to acquire deeper domain knowledge with well-rounded exposure in the fields of Film making, Television Production, Audio production, Photography, Advertising, Drawing, Animation, Graphic designing, Print production and other aspects of visual communication.

Semester I	Semester II	Semester III	Semester IV	Semester V	Semester VI
Language-I English-I  <b>CORE</b> Introduction to Communication, Communication Media  <b>ALLIED</b> Introduction to Social Psychology, Allied Practical I - Drawing  <b>VALUE EDUCATION</b> Environmental Studies	Language-II English-II  <b>CORE</b> Fundamentals of Advertising Core Practical I – Advertising  <b>ALLIED</b> Writing  <b>VALUE EDUCATION</b> Human Rights	<b>CORE</b> Communication Theories, Writing for Media  <b>ALLIED</b> Autography Practical II –Audio Production  <b>SKILL BASED COURSE</b> Computers in Communication media –I, Tamil @ / Advanced Tamil (or) Yoga for Human Excellence / Women's Right # Constitution of India	<b>CORE</b> Introduction to Photography, Practical - Photography  <b>ALLIED</b> Instructional Design  <b>SKILL BASED COURSE</b> Computers in Communication media –II, Tamil @ / Advanced Tamil # (or) General Awareness	<b>CORE</b> Film Studies, Media Ethics, Magazine Production, Layout & Design, Practical III - Print Production  <b>ELECTIVE –I</b>  <b>SKILL BASED COURSE</b> Web Designing	<b>CORE</b> Commercial Broadcasting, Integrated Marketing Communication, Practical - Video Production  <b>ELECTIVE –II</b> <b>ELECTIVE –III</b>  <b>SKILL BASED COURSE</b> Computers in Communication Media and Web Designing Practical Extension Activities.

### List of Elective Papers

Elective – I	Elements of Film Video Production / Screen Play / Film Marketing and Distribution
Elective – II	Advertising and Public Relations / Media Planning / Market Survey
Elective – III	Graphic Production / Event Management / Introduction to Design and Visual Culture

### PROGRAMME FEATURES

Semester I	EDGE	EDGE+
Sem 1	<ul style="list-style-type: none"> <li>Workshop - How to Appreciate Films, Fundamentals of Drawing, Techniques of Photography</li> <li>Online Courses- Coursera, Swayam</li> <li>Study Visits - Art Exhibition</li> </ul>	<ul style="list-style-type: none"> <li>Certificate in Film Appreciation, Film &amp; Television Institute of India, Pune</li> <li>Certificate in DSLR Photography , Whistling Woods, Mumbai</li> <li>Certificate in Painting Konsult Art &amp; Design Academy, Bangalore</li> </ul>
Sem 2	<ul style="list-style-type: none"> <li>Script writing for Film Workshop</li> <li>Workshop on Design thinking, Photo Editing</li> <li>Online Courses</li> <li>Internships</li> <li>Study Visit- Explore the legacy of Kongu Region, Chennai International Film Festival</li> <li>Field project- Coimbatore Vizha</li> </ul>	<ul style="list-style-type: none"> <li>International Summer School: Digital Photography</li> <li>University of Leeds, UK</li> <li>Certificate in Writing for Films, Film &amp; Television Institute of India, Pune</li> <li>Certificate in Graphic design, Orita Sinclair, Singapore</li> <li>Certificate in Adobe Photoshop, Orita Sinclair, Singapore</li> </ul>
Sem 3	<ul style="list-style-type: none"> <li>Workshop on Sound in Cinema</li> <li>Workshop on Advertising design, Event Photography</li> <li>Online Courses</li> <li>Study Visit- Ramoji Rao Film City, Hyderabad</li> </ul>	<ul style="list-style-type: none"> <li>Certificate in Music Production/ Audio Engineering</li> <li>Orita Sinclair, Singapore</li> <li>Certificate in UI &amp; UX, Orita Sinclair, Singapore</li> <li>Certificate in Photo Journalism , Creative Hut, Kottayam, Kerala</li> </ul>
Sem 4	<ul style="list-style-type: none"> <li>Acting for Cinema Workshop</li> <li>Workshop on Game development, Wildlife Photography</li> <li>Study Visit- Wildlife Photography</li> <li>Field Project- Social Awareness Campaign</li> <li>Internships</li> </ul>	<ul style="list-style-type: none"> <li>International Summer School – 3D Animation</li> <li>Nottingham Trent University, UK</li> <li>Certificate in Film Direction, LV Prasad Academy, Chennai</li> <li>Certificate in Wildlife photography, Creative Hut, Kottayam, Kerala</li> </ul>
Sem 5	<ul style="list-style-type: none"> <li>Workshop - DSLR Cinematography, 3D Character Design, Setting up your own photography Studio</li> <li>Study Visit – Animation Firm</li> <li>Field Projects</li> </ul>	<ul style="list-style-type: none"> <li>International Short Courses - Film School in a Week, London College of Communication UK</li> <li>Certificate in Digital Cinematography, LV Prasad Academy, Chennai</li> <li>Certificate in Animation &amp; VFX, Annapurna International School of Film &amp; TV, Hyderabad</li> <li>Certificate in Industrial Photography Creative Hut, Kottayam, Kerala</li> </ul>
Sem 6	<ul style="list-style-type: none"> <li>Workshop on Film Editing Techniques , VFX and Special Effects , Ad Photography</li> <li>Study Visit – VFX Firm</li> <li>Social Awareness Campaigns</li> <li>Field Projects</li> </ul>	<ul style="list-style-type: none"> <li>Certificate in Non Linear Editing, Whistling Woods, Mumbai</li> <li>Certificate in Fashion Photography , Whistling Woods, Mumbai</li> <li>Certificate in Game design</li> </ul>

# SCIENCE

## SCHOOL OF FORMAL SCIENCES

**B.Sc. Mathematics\***  
*Analytics path*



# MATHEM

## B.Sc. MATHEMATICS

### **Eligibility**

A pass in HSC with Mathematics

### **Integrated Programme**

Data Sciences

### **Career Paths**

There are a multitude of interesting and rewarding jobs that students of mathematics today can get into such as actuaries, manufacturing firms, consulting firms, government agencies and tech-based companies.



## B.Sc. Mathematics

**Mathematics** is the study of quantity, structure, space and change. A Bachelor of Science degree in Mathematics is a culmination of in-depth knowledge of geometry, trigonometry, calculus and other theories. It also explores related topics like Computer Science and Statistics. This degree course helps students in building a good foundation base for pursuing higher studies.

Semester I	Semester II	Semester III	Semester IV	Semester V	Semester VI
Language-I English-I  <b>CORE</b> Classical Algebra, Calculus  <b>ALLIED</b> Paper I Chosen by the College  <b>VALUE EDUCATION</b> Environmental Studies	Language-II English-II  <b>CORE</b> Analytical Geometry, Trigonometry, Vector Calculus and Fourier Series  <b>ALLIED</b> Paper II Chosen by the college  <b>VALUE EDUCATION</b> Human Rights	Language – III English – III  <b>CORE</b> Differential Equations and Laplace Transforms, Statics  <b>ALLIED</b> Paper III Chosen by the college  <b>SKILL BASED COURSE</b> Operations Research –I  <b>NON-MAJOR ELECTIVE - I</b> (Yoga for Human Excellence)/ Women's Rights	Language – IV English – IV  <b>CORE</b> Dynamics, Programming in C  <b>ALLIED</b> Paper II Chosen by the college  Practical - (Allied)  <b>SKILL BASED COURSE</b> Operations Research –Paper II,  <b>NON-MAJOR ELECTIVE - II</b> General Awareness	<b>CORE</b> Real Analysis-I, Complex Analysis-I, Modern Algebra-I, Discrete Mathematics  <b>ELECTIVE –I</b>  <b>SKILL BASED COURSE</b> Operations Research Paper III	<b>CORE</b> Real Analysis-II, Complex Analysis-II, Modern Algebra-II  <b>ELECTIVE –II ELECTIVE –III</b>  <b>SKILL BASED COURSE</b> Operations Research paper IV Extension Activities

### List of Elective Papers

Elective – I	Astronomy - I / Numerical Methods - I
Elective – II	Astronomy - II / Numerical Methods - II
Elective – III	Graph Theory / Automata Theory & Formal Languages / Programming in C++**

### PROGRAMME FEATURES

Semester I	EDGE	EDGE+
Sem 1	<ul style="list-style-type: none"> <li>Math behind Moneyball - Online Course - University of Houston</li> <li>Intro to Mathematical Thinking - Online Course - Stanford University</li> </ul>	<ul style="list-style-type: none"> <li>Certification in MS Excel</li> </ul>
Sem 2	<ul style="list-style-type: none"> <li>Introduction to Game Theory - Online Course - University of British Columbia</li> <li>Algorithms and Machines - Online Course - Princeton University</li> </ul>	<ul style="list-style-type: none"> <li>Certification in SQL</li> <li>Certification in Tableau</li> </ul>
Sem 3	<ul style="list-style-type: none"> <li>Business Analytics Specialization - Online Course - University of Pennsylvania</li> <li>Analysis of Algorithms - Online Course - Princeton University</li> </ul>	<ul style="list-style-type: none"> <li>Certification in R</li> <li>Certification in MySQL</li> </ul>
Sem 4	<ul style="list-style-type: none"> <li>Machine Learning - Online Course - Stanford University</li> <li>Mathematics for Machine Learning - Online Course - Imperial College</li> </ul>	<ul style="list-style-type: none"> <li>Certification in Python</li> <li>Certification in Stata</li> </ul>
Sem 5	<ul style="list-style-type: none"> <li>Data Science Specialization - Online Course - John Hopkins University - Part I</li> <li>Introduction to Deep Learning - Online Course - Intel</li> </ul>	<ul style="list-style-type: none"> <li>Certification in Java</li> </ul>
Sem 6	<ul style="list-style-type: none"> <li>Data Science Specialization - Online Course - John Hopkins University - Part II</li> <li>Big Data - Online Course- University of California San Diego</li> </ul>	<ul style="list-style-type: none"> <li>Certification in Hadoop</li> <li>Certification in Spark/Hive</li> </ul>

# SOCIALS

## SCHOOL OF SOCIAL SCIENCES

**B.A. Political Science\***

*Civil services preparatory path*

**B.Sc. Psychology\***

*Counselling path*

**Master of Social Work\***

*Social Entrepreneurship path*

# POLITICAL SCIENCE

## B.A.

### **Eligibility**

A pass in HSC from any stream

### **Integrated Programme**

Civil Services Studies

### **Career Paths**

Political analyst, Civil Servant, Diplomat, Research, Think Tanks, Policymaking and Governance NGO's, News media and in Education. Civil Service Exam, Government Exam (UPSC, TNPSC, IBPS and SSC) | Preferred course for Indian Foreign Service





## B.A. Political Science

**Political Science** encompasses the study of national and international political systems. The course will give an idea about how a nation is governed, helps to understand on how to interpret and analyze political systems. It also incorporates the study of historical and modern political system, governance, public administration, governmental policies, international relations and public affairs. Economics and Sociology are covered as necessary in the Political science course. The courses introduces the students to thinkers, ideals and ideologies of ancient to modern world. The course deals with the history of political development, various political revolutions across the world, thus helping to understand the present political structures across the world.

Semester I	Semester II	Semester III	Semester IV	Semester V	Semester VI
Language-I English-I	Language-II English-II	Language – III English – III	Language – IV English – IV	<b>CORE - IX</b> Western Political Thought	<b>CORE - XIII</b> Indian Political Thought
<b>CORE - I</b> Introduction to Political Theory	<b>CORE - III</b> Principles of Public Administration	<b>CORE - V</b> Indian Polity	<b>CORE - VII</b> Governance in India	<b>CORE - X</b> Foreign Policy of India	<b>CORE - XIV</b> Select World Constitutions (U.K, U.S.A, SWISS, FRANCE and JAPAN)
<b>CORE - II</b> Introduction to Political Theory	<b>CORE - IV</b> India and the World	<b>CORE - VI</b> Indian Administration	<b>CORE - VIII</b> International Relations	<b>CORE - XI</b> Outline of World History	<b>CORE - XV</b> International Organizations
<b>ALLIED - I</b> Principles of Sociology	<b>ALLIED - II</b> Indian Economy	<b>ALLIED - III</b> Social Problems in India	<b>ALLIED - IV</b> Introduction to Psychology	<b>CORE - XII</b> Internal Security	<b>ELECTIVE - II</b> Indian History - II /Indian Freedom Struggle
<b>ENVIRONMENT</b> EVS	<b>VALUE EDUCATION</b> Ethics and integrity	<b>SKILL BASED</b> <b>SUBJECT - 1</b> Creative Writing	<b>SKILL BASED</b> <b>SUBJECT - 2</b> Ethics and Introduction to Statistics and Big Data Analysis,SPSS	<b>ELECTIVE - I</b> Indian History - I / Ancient and Medieval History	<b>ELECTIVE - III</b> India and World Geography
				<b>SKILL BASED</b> <b>SUBJECT - 3</b> Interview Skills	<b>SKILL BASED</b> <b>SUBJECT - 4</b> Public Speaking
					<b>EXTENSION ACTIVITIES</b>

Outside the class hours	Total Papers = 36
1. News Paper reading 2. Guest Lectures on contemporary issues 3. Basic Numerical skills 4. Writing Skills 5. Personality Development	Language = 8 Core = 15 Allied = 4 Elective = 3 EVS = 1 Skill based Subject = 4 Value Education = 1 Extension = 1

List of Elective Papers	
Elective – I	Consumer Behaviour / Sports Psychology / HRM
Elective – II	Behaviour Modification / Guidance and Counseling Services / Psychology of Adjustment
Elective – III	Environmental Psychology / Forensic Psychology / Psychology & Gender Issues

### PROGRAMME FEATURES

Semester I	EDGE	EDGE+
Sem 1	<ul style="list-style-type: none"> <li>Orientation for Government exams</li> <li>Guided reading of NCERT's               <ul style="list-style-type: none"> <li>a. History</li> <li>b. Political Science</li> <li>c. Geography</li> </ul> </li> <li>Aptitude               <ul style="list-style-type: none"> <li>a. English comprehension</li> <li>b. Interpersonal skills</li> <li>c. Communication skills</li> <li>d. Basic numeracy</li> <li>e. Data interpretation</li> </ul> </li> <li>Art of reading news papers</li> <li>Field visits to gram anganwadi centres and primary health care centres</li> <li>Guest Lectures by Civil Servants</li> </ul>	<ul style="list-style-type: none"> <li>Spoken English classes</li> <li>SSB Training Module – Physical and Psychological training</li> <li>Certificate in community radio (CCR)</li> <li>MOOC – Massive Open Online Courses</li> <li>Introspection and Thought analysis</li> <li>Freeing thoughts from thinkers : Case study</li> </ul>
Sem 2	<ul style="list-style-type: none"> <li>Guided Reading of NCERT's – Basics               <ul style="list-style-type: none"> <li>a. History</li> <li>b. Political Science</li> <li>c. Geography</li> <li>d. Economics</li> </ul> </li> <li>Aptitude               <ul style="list-style-type: none"> <li>a. Logical reasoning</li> <li>b. Analytical ability</li> <li>c. Decision making and problem solving</li> <li>d. Basic numeracy</li> <li>e. General mental ability</li> </ul> </li> <li>Workshop: To understand and analyse Contemporary issues and issues of current relevance – National and International</li> <li>Art of answer writing for Mains</li> <li>Volunteering: 120 hours per semester               <ul style="list-style-type: none"> <li>a. NGO's</li> <li>b. SHG's</li> <li>c. Local Government bodies</li> </ul> </li> </ul>	<ul style="list-style-type: none"> <li>Complex systems approach to the study of ideology</li> <li>Compulsory Foreign Language (CFL) French</li> <li>Certificate in NGO Management</li> <li>Certificate in Environmental studies</li> <li>The need for Cognition test</li> <li>Toastmasters</li> <li>Understanding the Aryan – Dravidian divide</li> <li>Internships – LAMP, Rotary Peace</li> <li>MOOC</li> </ul>

Sem 3	<ul style="list-style-type: none"> <li>Understanding the Basics +               <ol style="list-style-type: none"> <li>History</li> <li>Political Science</li> <li>Geography</li> <li>Economics</li> </ol> </li> <li>Selected chapters from Chemistry, Biology and Physics (12th STD)</li> <li>Indian Polity for Government Exams</li> <li>Internships</li> <li>Mandatory training and volunteer at NCC and NSS respectively</li> <li>Field visits to Gram Panchayath – 7 day camps</li> <li>Guest Lectures by Civil service officers</li> </ul>	<ul style="list-style-type: none"> <li>Convergence and divergence in the study of ideology</li> <li>Orienting self and National goals with the UN</li> <li>Diploma in Panchayath level administration and development</li> <li>Certificate in Anti Human Trafficking</li> <li>Leadership Building Programmes</li> <li>Compulsory Foreign Language (CFL) French</li> <li>North Bharath Dharshan: Experiencing North India in 20 days – Knowledge tour</li> <li>MOOC</li> </ul>
Sem 4	<ul style="list-style-type: none"> <li>Courses on the following subjects for Government exams               <ol style="list-style-type: none"> <li>Economics</li> <li>Geography</li> <li>Environment</li> <li>Art and Culture</li> <li>Globalization, Social empowerment, Communalism, Regionalism and Secularism</li> </ol> </li> <li>Mandatory training and volunteer at NCC and NSS respectively</li> <li>Field visit to Local Government centres – Panchayth and Municipal administration</li> <li>Workshop: On Self-awareness and Leadership</li> </ul>	<ul style="list-style-type: none"> <li>Certificate programme in Rural development</li> <li>Certificate in Human rights</li> <li>Compulsory Foreign Language (CFL) Japanese</li> <li>Outbound leadership programme (NALS, LEAP etc.,)</li> <li>International study tour</li> <li>Urban fellows programme (IIHS, Bangalore)</li> <li>MOOC</li> </ul>
Sem 5	<ul style="list-style-type: none"> <li>Courses on the following subjects for Government exams               <ol style="list-style-type: none"> <li>History</li> <li>World History</li> <li>International Relations</li> <li>Security</li> <li>Science and Technology</li> <li>Disaster Management</li> </ol> </li> <li>Guest Lectures: Attaining Sustainable Development Goals (SDG 20)</li> </ul>	<ul style="list-style-type: none"> <li>Certificate in social work and criminal justice system</li> <li>South Bharath Dharshan: Experiencing South India in 20 days</li> <li>International Exchange programmes</li> <li>Understanding thinkers for the south</li> <li>International study tour</li> <li>SBI Youth for India fellowship</li> <li>MOOC</li> </ul>
Sem 6	<ul style="list-style-type: none"> <li>Courses on the following subjects for Government exams</li> <li>Political Science and International Relations</li> <li>Ethics and Integrity – Theory and case studies</li> <li>Workshop: Presentation on Thinkers and Ideologies</li> </ul>	<ul style="list-style-type: none"> <li>Certificate in International Humanitarian Law</li> <li>Compulsory Foreign Language (CFL) Arabic</li> <li>Personality Test (Interview preparation for Civil service and other Government exams)</li> <li>North – East Bharath Dharshan: Experiencing North East in 20 days – Knowledge tours</li> <li>LAMP Fellowship : Legislative Assistant for Member of Parliament fellowship</li> <li>Gandhi Fellowship, Prime minister Rural Fellowship</li> <li>MOOC</li> </ul>

# PSYCHOLOGY

## B.Sc.

### Eligibility

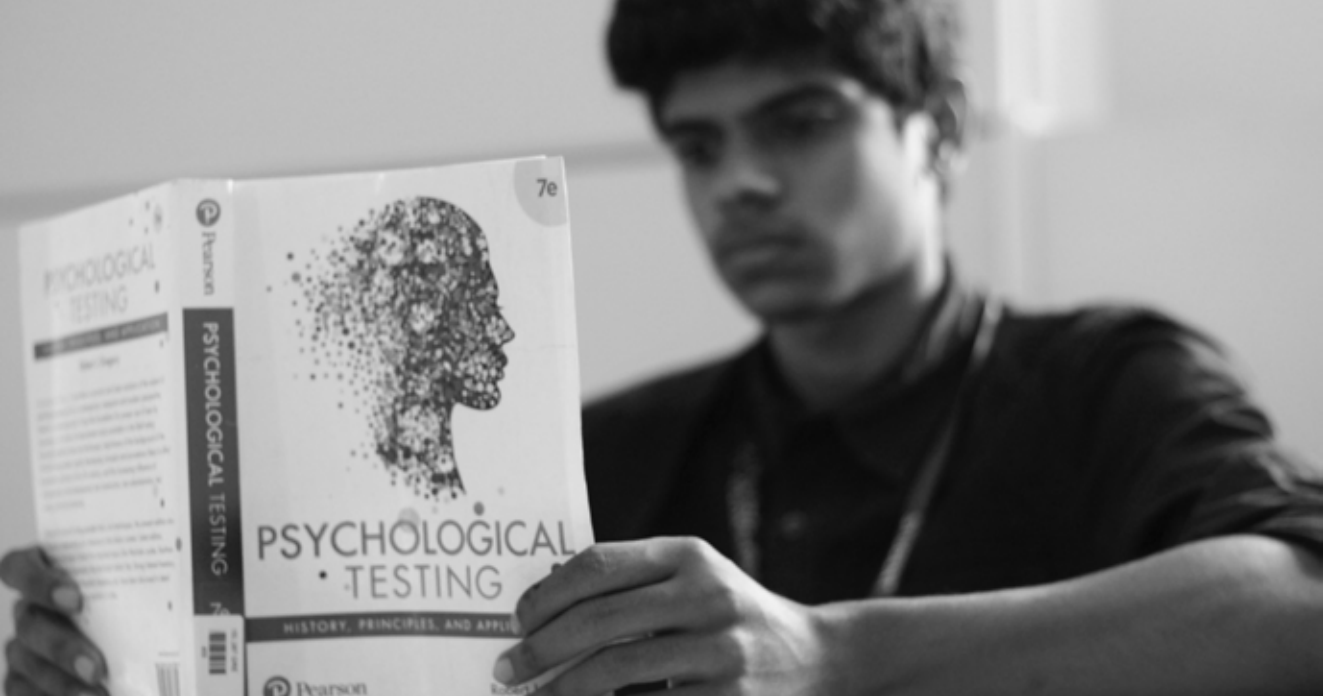
A pass in HSC from any stream

### Integrated Programme

Counselling

### Career Paths

A bachelor's degree in psychology can still function as a valuable starting point for a number of career paths. These career paths may or may not be in the field of psychology; the skills acquired from a bachelor's in psychology can be applied to a wide range of promising fields. Programmes aim to provide a sound foundation for further study and for development of a career as a Professional Psychologist in Education, Social, Health services or in Industry



## B.Sc.Psychology

**Psychology** offers papers which focuses on the History and Basics of Psychology, the development of the individual, an overview of Statistics and also covers diverse areas like Abnormal Psychology, Behaviour in Organisations, Counselling Psychology, Health Psychology and Social Psychology thus providing an exposure to the different areas of Psychology.

Semester I	Semester II	Semester III	Semester IV	Semester V	Semester VI
Language-I English-I  <b>CORE</b> General Psychology I, Developmental Psychology I  <b>ALLIED</b> Biological Basis of Behaviour  <b>VALUE EDUCATION</b> Environmental Studies	Language-II English-II (Communication Skills)  <b>CORE</b> General Psychology II, Developmental Psychology II  <b>ALLIED</b> Educational Psychology  <b>VALUE EDUCATION</b> Human Rights	Language – III English – III (Communication skills)  <b>CORE</b> Social Psychology I, Practical I- Experimental Psychology I  <b>ALLIED</b> Psychological Statistics  <b>SKILL BASED COURSE</b> Counseling Psychology  <b>NON-MAJOR ELECTIVE - I</b> Yoga for Human Excellence/ Women's Rights / Constitution of India	Language – IV English – IV  <b>CORE</b> Social Psychology II, Practical II- Experimental Psychology II  <b>ALLIED</b> Research Methodology  <b>SKILL BASED COURSE</b> Testing and Assessment  <b>NON-MAJOR ELECTIVE - II</b> General Awareness	<b>CORE</b> Abnormal Psychology I, Industrial/ Organizational Psychology I, Health Psychology, Practical III- Experimental Psychology III  <b>ELECTIVE-I</b>  <b>SKILL BASED COURSE</b> Life Skill Development	<b>CORE</b> Abnormal Psychology II, Industrial/ Organizational Psychology II, Practical IV- Experimental Psychology IV  <b>ELECTIVE –II</b> <b>ELECTIVE –III</b>  <b>SKILL BASED COURSE</b> Personality Assessment Extension Activities



### List of Elective Papers

Elective – I	Consumer Behaviour / Sports Psychology / HRM
Elective – II	Behaviour Modification / Guidance and Counseling Services / Psychology of Adjustment
Elective – III	Environmental Psychology / Forensic Psychology / Psychology & Gender Issues

### PROGRAMME FEATURES

Semester I	EDGE	EDGE+
Sem 1	<ul style="list-style-type: none"> <li>Self-Awareness Camp</li> <li>Online course on Introduction to Psychology – Yale University</li> <li>Workshop on Expressive Arts Therapy</li> <li>Case study analysis</li> </ul>	<ul style="list-style-type: none"> <li>Ethics in applied psychology</li> <li>Psychology for Living</li> <li>Introduction to Behaviour Modification</li> </ul>
Sem 2	<ul style="list-style-type: none"> <li>Online course on positive psychology – University of Pennsylvania</li> <li>Workshop on Stress management</li> <li>Workshop of Cognitive Psychology</li> <li>Field visits to Clinical setting / School setting / Special needs setting/ Rehabilitation setting</li> <li>Case study analysis</li> </ul>	<ul style="list-style-type: none"> <li>India Study Visit</li> <li>Certificate in Guidance and counselling</li> <li>International Summer school with partner Universities</li> <li>Basics of Cognitive Psychology</li> </ul>
Sem 3	<ul style="list-style-type: none"> <li>Workshop on Basics of Counselling</li> <li>Understanding Child Psychology and counselling</li> <li>Workshop on Introduction to Family Therapy</li> <li>Certificate course in Excel</li> <li>Internship at Clinical setting / School setting / Special needs setting/ Rehabilitation setting</li> <li>Case study analysis</li> </ul>	<ul style="list-style-type: none"> <li>Introduction to Clinical Psychology</li> <li>Certificate in Psychometric assessment</li> <li>Interdisciplinary certificate course</li> <li>Introduction to De-addiction Counselling by TT Ranganathan Clinical Research Foundation</li> </ul>
Sem 4	<ul style="list-style-type: none"> <li>Online course on Questionnaire Design by University of Michigan</li> <li>Research Project</li> <li>Field visits in areas of specialization</li> <li>Internship Clinical setting / School setting / Special needs setting/ Rehabilitation setting</li> <li>Interdisciplinary community Engagement</li> <li>Workshop on Transactional Analysis</li> <li>Case study analysis</li> </ul>	<ul style="list-style-type: none"> <li>Certificate in Ageing Psychology</li> <li>Course on Forensic Psychology</li> <li>Certificate in Psychological Rehabilitation</li> <li>Certificate course on Transactional Analysis</li> <li>India Industrial Visit</li> <li>Higher Education Training (National/ International Universities)</li> </ul>
Sem 5	<ul style="list-style-type: none"> <li>Online course on Science of Wellbeing- Yale University</li> <li>Workshop on Neuro Linguistic Programming</li> <li>Workshop on story telling for change work</li> <li>Career skills training</li> <li>About Rehabilitation Council of India</li> <li>Field Project</li> <li>Case study analysis</li> </ul>	<ul style="list-style-type: none"> <li>Certification of Credit Course on Sports Psychology, University Derby</li> <li>Higher Education Training (National/ International Universities)</li> <li>Diploma in Transaction Analysis</li> <li>Practitioner course in Neuro Linguistic Programming Training on Research Methods in Psychology</li> </ul>
Sem 6	<ul style="list-style-type: none"> <li>Online course on Mindware: Critical Thinking for Information age</li> <li>Online course on Psychology at Work</li> <li>Psychometric Profiling</li> <li>Introduction to Biological Psychology</li> <li>Training on Research Methods in Psychology</li> <li>Training on writing and publishing white papers</li> <li>Career skills training</li> <li>Field Project</li> </ul>	<ul style="list-style-type: none"> <li>Certificate Course on Organisational Psychology</li> <li>Certificate Course on Story Telling</li> <li>India Industrial Visit</li> <li>Higher Education Training (National/ International Universities)</li> <li>Short Training Programmes with EDII/ ISB</li> </ul>



# MASTER OF SOCIAL WORK

## **Eligibility**

Any 3 years Degree with a minimum aggregate percentage of 50%

## **Specializations**

HRM | Medical and Psychiatric Social Work | Community  
Development | Family and Child Welfare

## **Career Paths**

Social transformers are engaged in a number of careers such  
as government, corporates, social organizations, NGOs as policy  
developers, strategists and Programme managers Psychologist in  
Education, Social, Health services or in Industry



Specializations				
1	Specialization A	Human Resource Management	1. 2. 3. 4. 5.	Labour Welfare Labour Legislation Industrial Relations Human Resource Management Organizational Behaviour
2	Specialization B	Medical & Psychiatric Social Work	1. 2. 3. 4. 5.	Community Health and Medical Social Work Hospital Administration Foundation of Psychiatry – I Foundation of Psychiatry – II Psychiatric Social Work Practice
3	Specialization C	Community Development	1. 2. 3. 4. 5.	Rural Community Development Urban Community Development Welfare of Weaker Section Social Development Management of Non – Profit Organisation
4	Specialization D	Family & Child Welfare	1. 2. 3. 4. 5.	Family Welfare Child Welfare Welfare of Women Youth and the Aged Family Social Work and Working with Families Socialization of the Child and Child Welfare

### PROGRAMME FEATURES

Semester I	EDGE	EDGE+
Sem 1	<ul style="list-style-type: none"> <li>Social Experience Lab</li> <li>2 Days Field Work – Observation Visits - Industry/ Hospital/ NGOs</li> <li>Volunteering for teaching/ tuition for schools</li> <li>Study visit to HelikX</li> <li>On-line course - The science of well-being, Yale University</li> </ul>	<ul style="list-style-type: none"> <li>HR Development and Training (6 Months) Symbiosis</li> <li>Human Resource Management (6 months) Symbiosis</li> <li>Swayam Courses</li> <li>Certificate in disaster management</li> </ul>
Sem 2	<ul style="list-style-type: none"> <li>Rural Camp – 15 days – in an adopted village</li> <li>Workshops on Human Rights, Social Research</li> <li>Field Action Project – Case studies</li> <li>Study visits to local communities</li> <li>On-line course – Social Norms and Social Change, University of Pennsylvania</li> <li>Research paper/ Case studies presentation</li> <li>Workshops on social entrepreneurship</li> </ul>	<ul style="list-style-type: none"> <li>PG Diploma in Environment and Sustainable Development (1 Year) through IGNOU</li> <li>PG Diploma in Extension and Development Studies (1 Year) through IGNOU</li> <li>International Summer School with partner University</li> <li>National Study visit – Goonj Mumbai</li> <li>Swayam Courses</li> </ul>
Sem 3	<ul style="list-style-type: none"> <li>22 days of Field Training - Industry/ Hospital/ NGOs</li> <li>On-line course- Becoming a change maker: Introduction to social innovation</li> <li>International Study Visit (10 days)</li> <li>Research Paper/ case studies presentation and Publications</li> <li>Community Camps</li> <li>Career skills training</li> <li>Business plan for launching NGO/ Social Enterprise</li> </ul>	<ul style="list-style-type: none"> <li>PG Certificate in Entrepreneurship Development (1 Year) – Symbiosis</li> <li>National/ International Workshops on social entrepreneurship – In India or Overseas</li> <li>International Volunteering</li> <li>Swayam Courses</li> </ul>
Sem 4	<ul style="list-style-type: none"> <li>22 days field training / internships- Industry/ Hospital/ NGOs</li> <li>Research Project – Family Business/ NGO/ Government/ Industry</li> <li>Research Case studies presentation and publication</li> <li>Career skills training/ Placement Support</li> <li>Launching a NGO (if interested)</li> </ul>	<ul style="list-style-type: none"> <li>Completion of PG Diploma courses</li> <li>International Volunteering (UN/ Taproot etc)</li> <li>Swayam Courses</li> </ul>





# ADMISSIONS

## ADMISSION PROCESS

KCLAS will follow a robust admission process to ensure that the best candidates who would fulfil the vision of KCLAS be selected.



**Registration and online application form** All Interested and eligible candidates are required to register on-line . Registered candidates will receive a confirmation mail/ phone call from KCLAS, based on the candidates eligibility for the program. The candidates are required to fill the on-line application form and submit the printed form in the College.



**Selection process** The candidates will visit the campus on the pre-selected date and take KCLAST, the on-line/ design test which will be for one hour and 15 minutes with 4 sections. The candidate shall meet a faculty of the department or admission committee for an interview for 15 minutes. The faculty will also have a discussion with the parents.



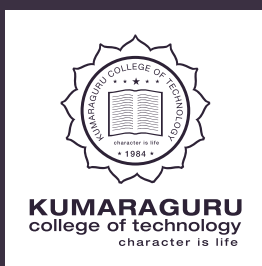
**The selection** Selection criteria scores will be based on culmulative performance and on selection, the originals are to be submitted and semester fee is to be paid on-line. If equivalency certificates are required as per norms, they should be submitted within a week. Undertaking on the KCLAS Code of Conduct and other relevant documents should be signed



**Provisional Admission to the program** Changes in program will not be entertained. If hostel is required, hostel fee is to be paid, undertaking on hostel rules should be signed by student and parent. The room will be allotted.

### Documents to be submitted for Admission

Board/ University	Documents to be submitted	Equivalency Certificate Details
IB (International Curriculum)	<ul style="list-style-type: none"> <li>10th Mark Statement</li> <li>12th Mark Statement</li> <li>12th Pass Certificate</li> <li>12th Migration Certificate</li> <li>Transfer Certificate</li> <li>Community Certificate</li> <li>Equivalency Certificate</li> </ul>	<p><b>Equivalency to be issued by:</b> Association of Indian Universities (AIU), New Delhi</p> <p><b>Procedure:</b> 1. AIU Application duly filled by student. 2. IGCSE mark sheet (with mark) - self attested 3. IBDP Indian specific mark sheet - self attested</p> <p><b>Eligibility:</b> Minimum 24 points in Grade XII.</p> <p><b>Processing Time:</b> 15 – 20 days</p> <p><b>Deadline for Submission:</b> Before college commences.</p>
ISC (Indian School Certificate)	<ul style="list-style-type: none"> <li>10th Mark Statement</li> <li>12th Mark Statement</li> <li>12th Pass Certificate</li> <li>12th Migration Certificate</li> <li>Transfer Certificate</li> <li>Community Certificate</li> <li>Equivalency Certificate</li> </ul>	<p><b>Equivalency to be issued by:</b> District Educational Officer (DEO)</p> <p><b>Procedure:</b> 1. Letter from Principal (if required) 2. Original &amp; Copy of 12th Mark Statement.</p> <p><b>Processing Time:</b> One week</p> <p><b>Deadline for Submission:</b> 10 working days from the date of receiving Original 12th Mark sheet</p>
NIOS (National Institute of Open Schooling)	<ul style="list-style-type: none"> <li>10th Mark Statement</li> <li>12th Mark Statement</li> <li>12th Migration Certificate</li> <li>Transfer Certificate</li> <li>Community Certificate</li> <li>Equivalency Certificate</li> </ul>	<p><b>Equivalency to be issued by:</b> District Educational Officer (DEO)</p> <p><b>Procedure:</b> 1. Letter from Principal (if required) 2. Original &amp; Copy of 12th Mark Statement.</p> <p><b>Processing Time:</b> One week</p> <p><b>Deadline for Submission:</b> One week from the date of receiving Original 12th Mark sheet</p>
CBSE & Kerala State	<ul style="list-style-type: none"> <li>10th Mark Statement</li> <li>12th Mark Statement</li> <li>12th Migration Certificate</li> <li>Transfer Certificate</li> <li>Community Certificate</li> </ul>	<ul style="list-style-type: none"> <li>All documents at the time of admission</li> <li>Equivalency Certificate – Not Required</li> </ul>
State Board (Tamil Nadu)	<ul style="list-style-type: none"> <li>10th Mark Statement</li> <li>12th Mark Statement</li> <li>12th Transfer Certificate</li> <li>Community Certificate</li> </ul>	<ul style="list-style-type: none"> <li>All documents at the time of admission</li> <li>Equivalency Certificate – Not Required</li> </ul>
UG from University	<ul style="list-style-type: none"> <li>10th Mark Statement</li> <li>12th Mark Statement</li> <li>UG Statement of Marks</li> <li>Provisional/ Degree Certificates</li> <li>Migration Certificate (If Other State)</li> <li>Transfer Certificate</li> <li>Community Certificate</li> </ul>	<ul style="list-style-type: none"> <li>Equivalence Certificate from AIU - If the UG Degree is from Foreign University.</li> <li>Eligibility Certificate from BU based on Equivalency Certificate.</li> </ul>



Kumaraguru College of Technology hails in the city of Coimbatore which is known worldwide for its heritage in engineering, automobile and textile spectrum through entrepreneurship. This ceaseless industrial development has greatly impacted the educational climate of the city and KCT aptly merges its engineering education with the industrial and entrepreneurial culture of the city and has laid a successful path for global perspectives and exchange. The academicians of KCT, with their diversity and competence find the right point of intersection of regional, national and international demands of engineering and technology and students are given relevant curricular inputs to showcase world class skills.

## COURSES OFFERED

Under Graduate Programmes : 14

Post Graduate Programmes : 14

SEE MORE DETAILED COURSE INFORMATION @  
<http://www.kct.ac.in/academics/departments/management-studies/>

Students  
5374



Teaching Staff  
375



Academic  
Support Staff  
108



Research Publications  
440



Industry Partners  
184



## Academic Departments

Aeronautical Engineering

Automobile Engineering

BioTechnology

Civil Engineering

Mechanical Engineering

Mechatronics Engineering

Electrical and Electronics Engineering

Electronics and Communication Engineering

Electronics and Instrumentation Engineering

Textile Technology

Fashion Technology

Science and Humanities

Computer Science and Engineering

Information Technology

Computer Applications

Management Studies



**KCT Business School**, was established in 2005 with a mission to impact on all the stakeholders through advancement, integration and application of knowledge. KCT.BS has a vision to be a knowledge hive for managerial excellence built on the values of Learning, Trust and Competence

The MBA program of KCT.BS has been ranked in the Top 75 in the country by the Ministry of HRD through NIRF. MBA program is offered with six specializations: Business Analytics, Entrepreneurship, Human Resources, Finance, Marketing and Operations. Four projects embedded in the program are Industry Immersion, Research Immersion, Internship and Social Immersion. High performing students can register for Honours Track. The MBA degree is awarded by Anna University.

Students  
358



Teaching Staff  
23



Academic  
Support Staff  
05



Research Publications  
59



Industry Partners  
52



## COURSES OFFERED

2 Years : MBA

1 Year : Master in Management

3 years : Ph.D Full Time

4 years : Ph.D Part Time

10 months : PGD in Business Analytics

10 months : Diploma in Management

SEE MORE DETAILED COURSE INFORMATION @  
<http://www.kct.ac.in/academics/departments/management-studies/>







## KUMARAGURU institute of agriculture

**Kumaraguru Institute of Agriculture**, the cherished dream of Arutchelvar Dr. N. Mahalingam was started in 2014 with the main aim of imparting agricultural education to rural youth and provide agricultural benefits to the local community. The primary objective of the institution is to tinge agriculture with technology to improve food production, to introduce novel and innovative methods in agriculture, to make agriculture viable and self-supportive. The institute carries with it the long standing tradition of Sakthi group of companies and the experience gained by Sakthi group organizations.

The back bone of Indian economy is Agriculture. Agriculture which is essential for the survival of mankind is centred in our villages. The Father of the Nation was precisely right when he said that "India lives in its villages". Agriculture today is facing a lot of challenges not only in our country but in almost all the growing nations. There is an urgent need to provide the farming community with the necessary steps to tackle the challenges and obstacles that they encounter due to the changing global scenario.

The Institution is located in an extensive area of about 115 acres of farm land on Bhavani-Athani-Sathy state highway, at Nachimuthupuram in Sakthi nagar.

Students  
280



Teaching Staff  
28



Academic  
Support Staff  
20



Academic Departments  
Crop Management  
Crop Improvement  
Crop Production  
Social Science  
Horticulture  
Agricultural Engineering  
Veterinary Science



Affiliated  
Tamil Nadu Agricultural  
University



### COURSES OFFERED

4 Years

B.Sc. (Hons.) Agriculture

SEE MORE DETAILED COURSE INFORMATION @  
<http://http://www.kia.ac.in>





**FORGE**

**Nominated as one of the 5  
Partner Incubators for the  
iDEX (Defence Innovation),  
a programme launched by  
the Ministry of Defence,  
Government of India**

**Selected by BOSCH, India as its  
Strategic Incubation Partner  
to manage Corporate-Startup  
engagements and Corporate  
Open-Innovation Programmes.**

FORGE is the incubation enterprise launched by the Coimbatore Innovation & Business Incubator (CIBI), founded with the vision to create & catalyse innovation powered enterprises that harness the power at the intersection of hardware, software, and computing technologies to solve real-world problems, creating economic gains and delivering social impact.

FORGE.FACTORY - the 20,000 sq.ft incubator established in Coimbatore, includes HWjunction - the fully integrated lab for full-spectrum hardware innovation offering equipment, tools, and resources in computing (AI/ML), IoT, electronics, desktop fabrication, 3D printing, drones, and automation & robotics, to support the design, development, and testing of 'manufacturing' ready prototypes.

ProtoSem MicroInnovators is a 15 week intensive skills & competencies development programme launched by FORGE exclusive to FINAL YEAR students in technical education. The programme is aimed to enhance the innovation, design, technical and entrepreneurial skills of the students & nurtures them to identify real world problems, validate the problem with the support from experts and user(s) and engineer a technology solution through a managed innovation process of prototype building. The possibility that some of these prototypes getting ready for production and launch as products and solutions in the market makes this programme a highly outcome oriented.



*C a r e e r I n t e g r a t e d E d u c a t i o n*

**Sakthi Excellence Academy** a venture started to address the growing needs for Educational Programmes in a burgeoning and buoyant Economy, with constantly changing Business models and new Technological developments. The promising initiative has grown from strength to strength over the years, by designing, framing and conducting programmes benchmarking industry standards and thereby acting as a catalyst in producing Corporate ready employees, who can take up their jobs and deliver from day one.

Sakthi Excellence Academy, started in the year 2011 under the aegis of Sakthi Group's Corporate Education programme involves in a gamut of activities under three key areas namely, Technical, Non-Technical and Socio-Cultural, making significant contributions and creating meaningful impact to all its' stakeholders.

## Programmes offered

### **Corporate Education Programmes**

Domain specific: Profiling, Curriculum framing, Recruitment and Training  
Development specific: Secretarial training, Personality development, Team functioning, Marketing orientation & Finance and Retailing its' stakeholders.

### **Domain Specific Programmes**

Recruiting and developing marketing officers for Sakthi Finance Limited (SFL)  
Conducting PG Diploma in Design Engineering for Oil & Gas Industry

### **Train the Trainer**

Faculty Induction Programme: Induction programmes to newly recruited school & college faculty  
Faculty Development Programme: Domain specific training programmes  
Student Empowerment Programme: Profiling, Counseling and Pre Placement

### **Teacher Training Programmes**

Excellent Teachers Initiative  
Teacher Development Programme









## Social Consciousness and Outreach

**“ The ultimate goal, the only goal, of all our endeavours, is the good of the society”**

- Arutchelvar Dr N Mahalingam



Namadhu Pangu was started in the year 2008 from the visionary of Arutchelvar Dr.N.Mahalingam that “If India has to continue her journey to progress and development, her villages have to develop. Industry and livelihood creation must go hand in hand with social development and participation of youth”.

Namadhu Pangu is an integrated community development initiative of Kumaraguru College of Technology which strives towards enhancing the quality of life of people in the villages surrounding KCT (Chinnavedampatti, Anjugam Nagar, Udayampalayam, NG Pudur and Chinnamettupalayam). This is achieved by utilizing the talent and expertise of committed students and faculty members effectively, who are keen to bring a change in the lives of the people in the villages. Namadhu Pangu is a volunteer driven programme dedicated to enriching the community and is a unique partnership that believes in commitment and expertise. The primary aim of NP is to sensitize students on the opportunities and concerns of society and encourage them to participate in the social construction. Here solutions for the social issues are provided by our expert team and are executed by committed student volunteers. Currently Namadhu Pangu works under 5 primary themes:

**EDUCATION | HEALTH | WOMEN EMPOWERMENT  
ENVIRONMENT | YOUTH EMPOWERMENT**



Kumaraguru Action for Relief and Empowerment (KARE), was founded in November 2015. This project supports the victims of natural disasters such as flood and man-made calamities like industrial accidents. This is yet another volunteer movement where many join hands when need arises.

KARE also takes initiatives in formulating viable solutions of aid during emergencies. At present, the strategy or focus of implementation is: Rescue, Relief, Rebuild, Research. KARE was able to respond fairly at once during the Chennai and Cuddalore floods in the year 2015. KCT-KARE, SSN and volunteers across India covered 35 villages, reaching out to 6900 households to distribute materials worth 83 Lakh rupees.





84



Kumaraguru  
College Of  
Technology

Prozone  
Mall

Peelamedu  
Junction

TIDEL  
Park

Fun Republic  
Mall

Coimbatore  
International  
Airport

Coimbatore  
North Junction

Brookfields  
Mall

Head Post Office

Office of The  
Commissioner  
of Police

District  
Collectorate

Coimbatore  
Main Junction

L&T Junction

Trichy Rd

Noyai River

Salem Kochi Highway

Pollechi Main Rd

Namma  
**COIMBATORE**





## Facts

- Coimbatore is part of the Nilgiri biosphere and is home to some of the most unique flora and fauna in the world
- The city has the largest number of small scale industries and is known for its entrepreneurial spirit
- Industrialisation in Coimbatore began in the latter half of the nineteenth century with the setting up of Coimbatore Spinning and Weaving Mills by Sir Robert Stanes.
- A large number of manufacturers of auto components, safety critical components for diverse applications including aerospace, are based out of Coimbatore.
- The city is also home to indigenous engineering: the first indigenous pump was manufactured in 1928, the diesel engine for cars, in 1972.
- Strategically located, the city has easy connectivity to the neighbouring 4 states of South India and the rest of the world.
- Coimbatore is one of India's safest cities and a thriving education hub and home to 6 Universities.
- KCLAS is located in Saravanampatti, the Northwest of Coimbatore. This suburb is the first IT hub of the city.
- Forge Factory, India's first hardware incubation centre, is part of the Kumaraguru group and is located in KCT Tech Park.

## Kumaraguru towards a sustainable ecosystem

WE CYCLE' - TO PROMOTE AN ECO-FRIENDLY MOBILITY ON THE CAMPUS, **100+ BICYCLES** ARE MADE AVAILABLE FOR THE STUDENTS AND FACULTY.

**50 KW SOLAR POWER STATION IS INSTALLED ON CAMPUS, WITH THE GOVERNMENT OF TAMIL NADU SPONSORING 34 LAKH RUPEES OF THE TOTAL EXPENDITURE.**

**A SOLAR WATER HEATER IS INSTALLED PRODUCING 50,000 LITRES OF HOT WATER PER DAY, THUS CUTTING DOWN ON THE ELECTRICITY CONSUMPTION.**



**A BIODIVERSITY IS FORMED ON THE CAMPUS TO HOME 55 BIRD SPECIES**

THE CAMPUS NURTURES AND SAFEGUARDS 4200 TREES, FILLING THE ENVIRONMENT WITH OXYGENATED AIR.



**AN ORGANIC COMPOST YARD AND A SEWAGE TREATMENT PLANT ARE THE TWO NOTABLE GO-GREEN INITIATIVES ON THE CAMPUS.**



# CAMPUS MAP



Chinnavedampatti,  
Saravanampatty,  
Coimbatore,  
Tamil Nadu 641049  
0422 266 1555



/kclas\_/



/WeareKCLAS/



kclas.ac.in

Where  
you  
want to be